



Aboveground Filter System Parts

Replacement Parts for
Aboveground Filter Systems

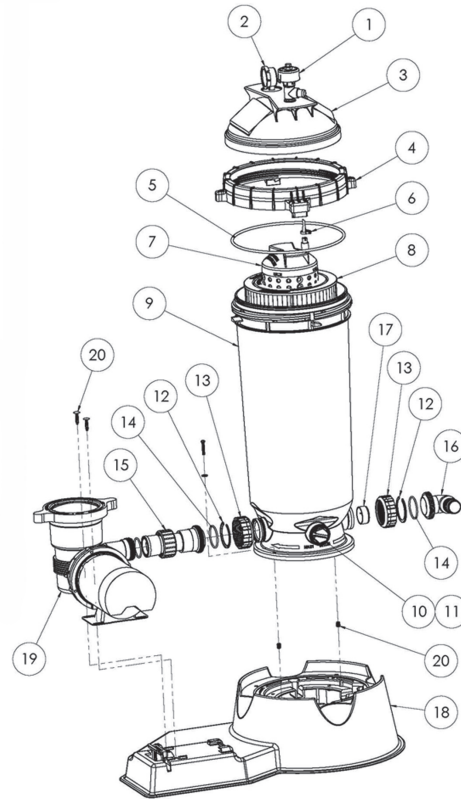


Clean & Clear® Filter Systems

Replacement Parts for Systems Manufactured 2009 and beyond



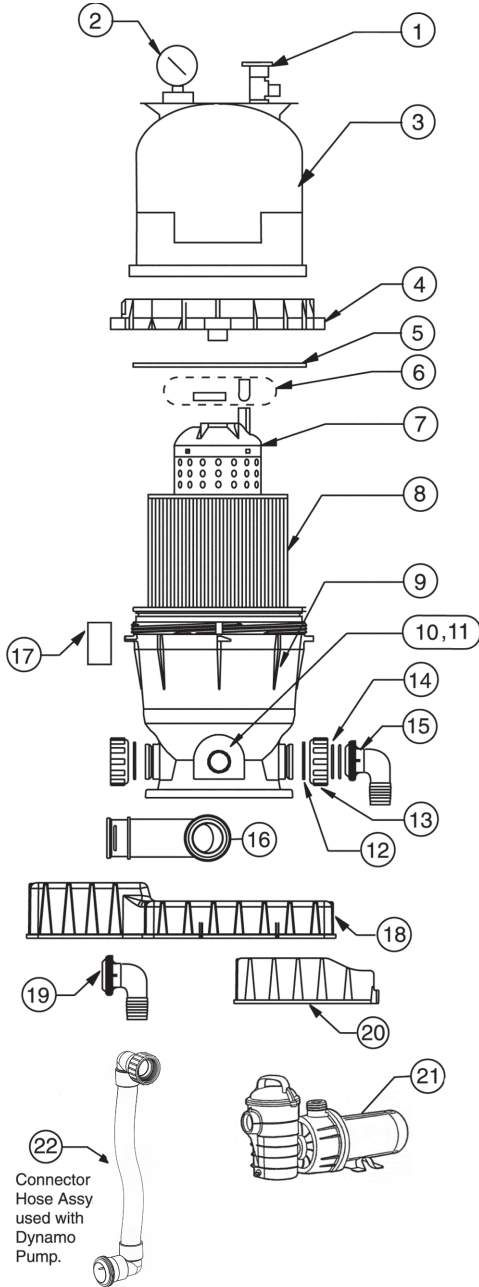
Item	Part No.	Description	US List	Can. List
CLEAN & CLEAR FILTER SYSTEMS				
1	98209800	High Flow Manual Relief Valve	27.29	30.56
2	190058	Pressure Gauge	34.18	38.28
3	178553	Lid, 50/100/125 sq. ft., Almond	127.33	142.61
3	178561	Lid, 75/150/175/200 sq. ft., Almond	118.73	132.98
4	59052900	Locking Ring Assy	78.14	87.52
5	87300400	Body O-Ring	7.68	8.60
6	59016200	Air Bleed Sock Kit	10.45	11.70
7	59053500	Center Core, 50 sq. ft.	92.61	103.72
7	59053600	Center Core, 75 sq. ft.	93.35	104.55
7	59053700	Center Core, 100/125 sq. ft.	108.82	121.88
7	59053800	Center Core, 150/175/200 sq. ft.	166.77	186.78
8	R173213	Cartridge Element, 50 sq. ft.	CALL	CALL
8	R173214	Cartridge Element, 75 sq. ft.	CALL	CALL
8	R173215	Cartridge Element, 100 sq. ft.	CALL	CALL
8	R178671	Cartridge Element, 125 sq. ft.	CALL	CALL
8	R173216	Cartridge Element, 150 sq. ft.	CALL	CALL
8	R178672	Cartridge Element, 175 sq. ft.	CALL	CALL
8	R173217	Cartridge Element, 200 sq. ft.	CALL	CALL
9	178562	Tank Bottom, 50/75, Almond	224.74	251.71
9	178563	Tank Bottom, 100/125/150/175/200, Almd	286.42	320.79
10	86202000	Drain Cap with O-Ring	15.16	16.98
11	51005000	O-Ring (Drain Cap)	5.50	6.16
12	39104500	C-Clip (Union Nut)	1.49	1.67
13	98212200	Union Nut	8.64	9.68
14	071426	O-Ring (Union)	1.28	1.43
15	155372	Pump to Filter Assembly (OptiFlo)	46.10	51.63
16	39107400	Outlet Connector	15.63	17.51
17	51516100	Check Valve Kit	31.67	35.47
18	155333P	Systems Base	CALL	CALL
18	155333CP	Systems Base, CSA Pump	164.39	184.12
19		OptiFlo® Pump, page 482.		
20	710009	Base Hardware Kit	13.51	15.13
ACCESSORIES				
	155151	Replacement Hose Kit, Flex Hose, 6 ft. ¹	81.18	90.92
	155005	Replacement Hose Kit, Flex Hose, 12ft ¹	107.13	119.99



¹ Replacement Hose Kits include two (2) hoses, four (4) hose adaptors and four (4) hose clamps.

Clean & Clear® Filter Systems

Replacement Parts for Systems Manufactured Prior to 2009



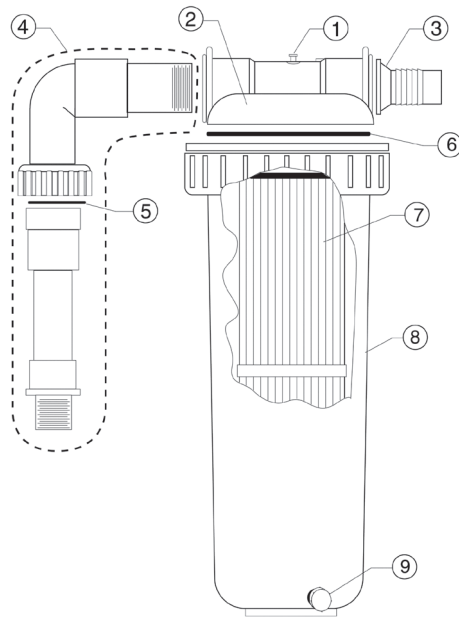
Connector Hose Assy used with Dynamo Pump.

Item	Part No.	Description	US List	Can. List	
CLEAN & CLEAR FILTER SYSTEMS					
1	98209800	High Flow™ manual air relief valve (HFMARV)	27.29	30.56	
2	190058	Gauge, pressure	34.18	38.28	
3	178553	Lid 50, 100 sq. ft., almond	127.33	142.61	
3	178561	Lid, 75/150/200 sq. ft., almond	118.73	132.98	
4	59052900	Locking ring assy.	78.14	87.52	
5	87300400	Body O-ring	7.68	8.60	
6	59016200	Air bleed sock kit	10.45	11.70	
7	59053500	Center core 50 sq. ft.	92.61	103.72	
7	59053600	Center core 75 sq. ft.	93.35	104.55	
7	59053700	Center core 100 sq. ft.	108.82	121.88	
7	59053800	Center core 150/200 sq. ft.	166.77	186.78	
8	R173213	Cartridge element 50 sq. ft.	75.31	84.35	
8	R173214	Cartridge element 75 sq. ft.	97.57	109.28	
8	R173215	Cartridge element 100 sq. ft.	119.69	134.05	
8	R173216	Cartridge element 150 sq. ft.	157.69	176.61	
8	R173217	Cartridge element 200 sq. ft.	196.82	220.44	
9	178562	Bottom 50 sq. ft., almond	224.74	251.71	
9	178554	Bottom 75 sq. ft., almond	223.37	250.17	
9	178563	Bottom 100 sq. ft., almond	286.42	320.79	
9	178560	Bottom 150/200 sq. ft., almond	279.64	313.20	
10	51516200	Drain cap ³	19.55	21.90	
10	86202000	Plug 1-1/2 in. drain, w/ O-ring ⁴	15.16	16.98	
11	86300500	Drain cap gasket ³	4.34	4.86	
11	51005000	O-ring, drain cap ⁴	5.50	6.16	
12	39104500	Union nut "C" clip	1.49	1.67	
13	98212200	Union nut	8.64	9.68	
14	071426	O-ring, union	1.28	1.43	
15	39107400	Fitting elbow pump connector ²	15.63	17.51	
16	170037	Fitting elbow pump connector ²	23.23	26.02	
17	51516100	Check valve kit	31.67	35.47	
18	170058	Base assy.	43.48	48.70	
19	79304700	Outlet connector w/ chlorinator attachment	16.40	18.37	
20	178541	Chlorinator base	27.28	30.55	
20	98200700	Bolt	2.97	3.33	
20	155109	T-nut	0.25	0.28	
21	OptiFlo® Pump, page 482 or Dynamo® Pump, page 483.				
22	175015	Pump/filter connector, Dynamo® ⁵	102.42	114.71	
22	170046	Pump/filter connector, OptiFlo®	102.19	114.45	

² Used on filters manufactured after 3/98.
³ Used on filters manufactured before 11/98.
⁴ Used on filters manufactured after 11/98.
⁵ Used on filters manufactured after 1/01 with the Dynamo® Pump.

Predator™ II Mini-Cellular Media Filter System

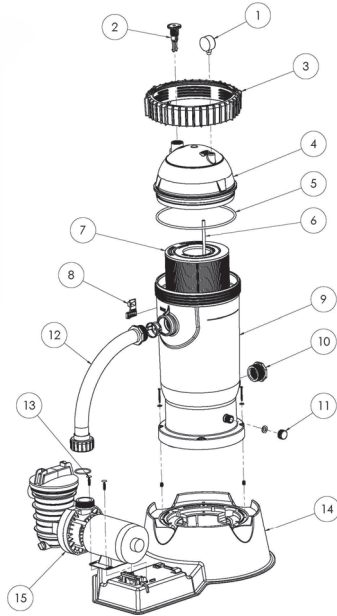
Replacement Parts



Item	Part No.	Description	US List	Can. List
PREDATOR II FILTER SYSTEM				
1	R172224X	Air relief valve	4.68	5.24
2	R172213XT	Lid	20.19	22.61
3	510166	Hose adapter	1.50	1.68
4	59019800	Pump connector	67.02	75.06
5	071426	O-ring	1.28	1.43
6	R172223	O-ring	4.68	5.24
7	R172327	Cartridge	24.60	27.55
8	R172212X	Body	31.40	35.17
9	154481	Drain plug	1.33	1.49
NOT SHOWN				
	R172214	Lock ring	13.95	15.62
	98105700	Base assy.	CALL	CALL

PXC Aboveground Filter System

Replacement Parts for Models manufactured 2009 and beyond



Item	Part No.	Description	US List	Can. List
PXC SYSTEMS (2009 and beyond)				
1	I5060-0000T	Pressure Gauge	36.79	41.20
2	24206-0103S	Air Release Valve w/O-Ring	8.05	9.02
4	25230-0102S	Filter Lid Assembly, PXC95	276.43	309.60
4	25230-0103S	Filter Lid Assembly, PXC150	331.69	371.49
5	25230-0010S	Tank O-Ring	15.06	16.87
6	25230-0007	Air Bleed Tube	7.82	8.76
7	25230-0095S	Cartridge Element, 95 sq. ft.	119.91	134.30
7	25230-0150S	Cartridge Element, 150 sq. ft.	175.07	196.08
8	25200-0007	Safety Latch	CALL	CALL
9	25230-0001S	Tank Body	298.53	334.35
10	U78-820P3	Bushing Reducer	10.17	11.39
11	32185-7074	Drain Cap with O-Ring	5.03	5.63
12	I55725	Pump to Filter Assembly (JWP)	58.66	65.70
12	I55719	Pump to Filter (Dynamo)	CALL	CALL
13	710009	Base Hardware Kit	13.51	15.13
14	I55333P	Systems Base	164.37	184.09
14	I55333CP	Systems Base, CSA Pump	164.39	184.12
15		Pump	CALL	CALL
ACCESSORIES				
	I55151	Kit, Flex Hose, 6 ft. ¹	81.18	90.92
	I55005	Kit, Flex Hose, 12 ft. ¹	107.13	119.99

¹ Replacement Hose Kits include two (2) hoses, four (4) hose adaptors and four (4) hose clamps.

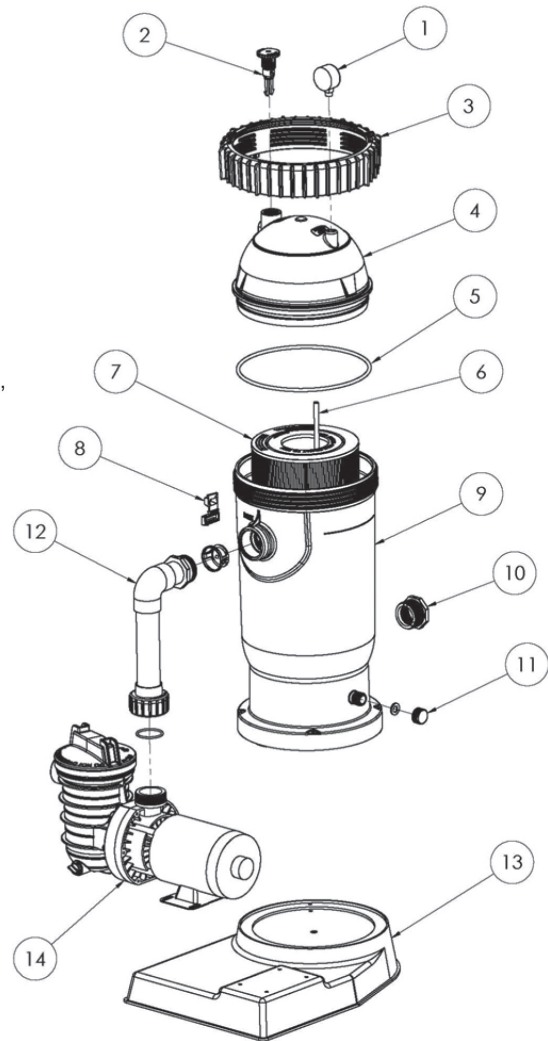
PXC Aboveground Filter System

Replacement Parts for Models manufactured prior to 2009



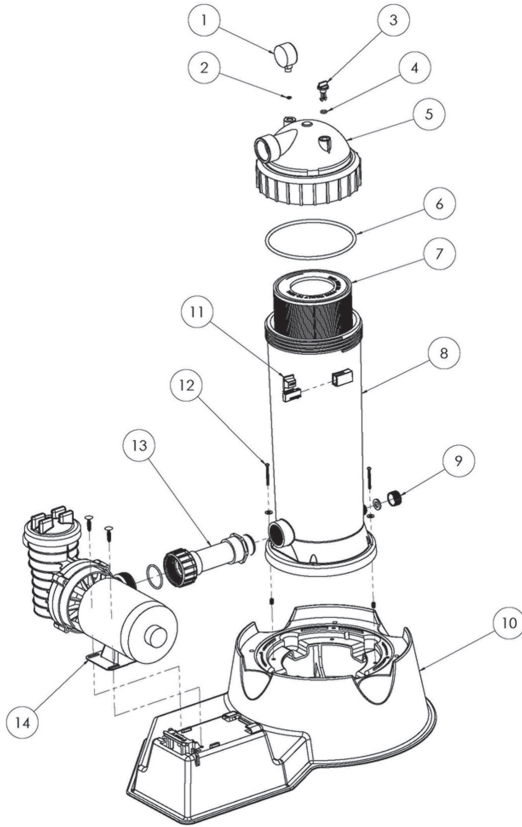
Item	Part No.	Description	US List	Can. List
PXC SYSTEMS (Prior to 2009)				
1	15060-0000T	Pressure Gauge	36.79	41.20
2	24206-0103S	Air Release Valve w/O-Ring	8.05	9.02
3	25200-0007	Safety Catch Closure Ring	CALL	CALL
4	25230-0102S	Filter Lid - PXC75 & PXC95	276.43	309.60
4	25230-0103S	Filter Lid PXC125 & PXC150	331.69	371.49
5	25230-0010S	Tank O-Ring	15.06	16.87
6	25230-0007	Air Bleed Tube- PXC75 & PXC95	7.82	8.76
6	25230-0008	Air Bleed Tube- PXC125 & PXC150	9.48	10.62
7	25230-0075S	Filter Cartridge Model PXC75	104.00	116.48
7	25230-0095S	Filter Cartridge Model PXC95	119.91	134.30
7	25230-0125S	Filter Cartridge Model PXC125	153.29	171.68
7	25230-0150S	Filter Cartridge Model PXC150	175.07	196.08
8	25200-0007	Safety Latch	CALL	CALL
9	25230-0001S	Tank Body	298.53	334.35
10	U78-820P3	Bushing Reducer	10.17	11.39
11	32185-7074	Drain Cap w/O-Ring	5.03	5.63
12	155737	Pump to Filter Assembly (JWP)	82.15	92.01
12	155763	Pump to Filter Assembly (Dynamo)	CALL	CALL
13	25200-0010	Platform Base	88.47	99.09
14		Pump	CALL	CALL
ACCESSORIES				
	155151	Kit, Flex Hose, 6 ft. ¹	81.18	90.92
	155005	Kit, Flex Hose, 12 ft. ¹	107.13	119.99

¹ Replacement Hose Kits include two (2) hoses, four (4) hose adaptors and four (4) hose clamps.



PRC Aboveground Filter System

Replacement Parts for Models PRC50, PRC75 manufactured 2009 and beyond



Item	Part No.	Description	US List	Can. List
PRC FILTER SYSTEMS				
1	I5060-0000T	Pressure Gauge	36.79	41.20
2	WC8-72D	Screen Filter	2.33	2.61
3	25010-0004	Air Relief Valve	3.28	3.67
4	U9-359	O-Ring	CALL	CALL
5	25200-0103S	Tank Lid Assembly	97.31	108.99
6	25200-0011S	Tank O-Ring	31.04	34.76
7	25200-0150S	Cartridge Element, 50 sq. ft.	82.65	92.57
7	25200-0175S	Cartridge Element, 75 sq. ft.	106.80	119.62
8	25200-0001S	Tank Body	159.21	178.32
9	32185-7074	Drain Cap with O-Ring	5.03	5.63
10	I55331P	Systems Base (ABG/JWP)	164.72	184.49
10	I55331CP	Systems Base, CSA (ABG/JWP)	164.73	184.50
10	I55333P	Systems Base (OptiFlo)	164.37	184.09
10	I55333CP	Systems Base, CSA (OptiFlo)	164.39	184.12
12	710009	Base Hardware Kit	13.51	15.13
13	I55379	Pump to Filter Assembly (ABG)	56.05	62.78
13	I55373	Pump to Filter Assembly (OptiFlo) ²	CALL	CALL
13	I55766	Pump to Filter Assembly (OptiFlo) ³	CALL	CALL
14		Pump	CALL	CALL
ACCESSORIES				
	I55151	Kit, Flex Hose, 6 ft. ¹	81.18	90.92
	I55005	Kit, Flex Hose, 12 ft. ¹	107.13	119.99

¹ Replacement Hose Kits include two (2) hoses, four (4) hose adaptors and four (4) hose clamps.

² When replacement OptiFlo pump is used on base I55333P and I55333CP.

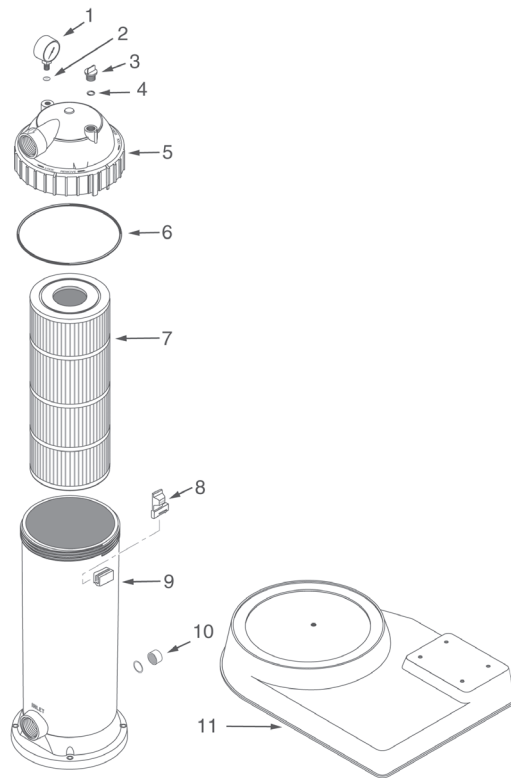
³ When replacement OptiFlo pump is used on base I55331P and I55331CP.

PRC Aboveground Filter System

Replacement Parts for Models PRC50, PRC75 manufactured prior to 2009

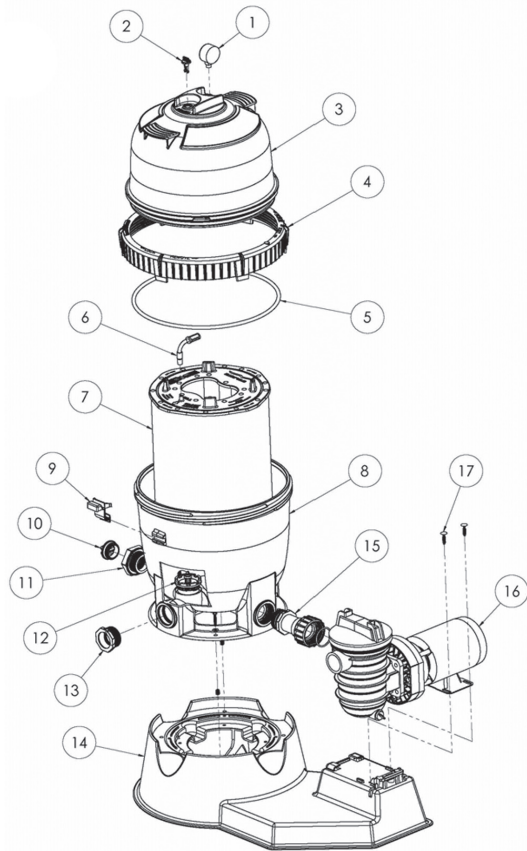


Item	Part No.	Description	US List	Can. List
PRC FILTER SYSTEMS				
1	15060-0000T	Pressure Gauge	36.79	41.20
2	WC8-72D	Screen Filter	2.33	2.61
3	25010-0004	Air Relief Valve	3.28	3.67
4	U9-359	O-Ring	CALL	CALL
5	25200-0103S	Tank Lid Assembly	97.31	108.99
6	25200-0011S	Tank Lid O-Ring with Silicon Tube	31.04	34.76
7	25200-0150S	Filter Cartridge	82.65	92.57
7	25200-0175S	Filter Cartridge	106.80	119.62
8	25200-0007	Safety Latch	CALL	CALL
9	25200-0001S	Filter Tank	159.21	178.32
9	25200-0002S	Filter Tank	185.74	208.03
10	32185-7074	Drain Cap Assembly with Washer	5.03	5.63
11	25200-0010	Platform Base	88.47	99.09
NOT SHOWN				
	32155-4139	Operating Instruction Decal	CALL	CALL



PLM Filter Systems

Replacement Parts for Systems manufactured 2009 and beyond



Item	Part No.	Description	US List	Can. List
PLM FILTER SYSTEMS				
1	I5060-0000T	Pressure Gauge	36.79	41.20
2	25010-0200	Air Relief Valve Assembly	4.44	4.97
3	27001-0020S	Tank Shell Upper Half	236.56	264.95
4	27001-0054S	Posi-Lok Ring	157.95	176.90
5	27001-0061S	Body O-Ring	41.22	46.17
6	24800-0121	Air Bleed Assembly	13.71	15.36
7	27002-0100S	Filter Module - PLM100	219.75	246.12
7	27002-0150S	Filter Module - PLM150	326.21	365.36
8	27001-0009S	Tank Shell Lower Half	401.86	450.08
9	27001-0051	Safety Latch	11.12	12.45
10	27001-0022	1-1/2 in. NPT Plug	2.21	2.48
11	24900-0510	Adapter Fitting	21.48	24.06
12	27001-0130S	Spring Check Valve	17.15	19.21
13	U78-820P3	2 in. to 1-1/2 in. Pipe Reducer	10.17	11.39
14	I55331P	Systems Base (ABG/JWP)	164.72	184.49
14	I55331CP	Systems Base, CSA (ABG/JWP)	164.73	184.50
14	I555333P	Systems Base (OptiFlo)	CALL	CALL
14	I555333CP	Systems Base, CSA (OptiFlo)	CALL	CALL
15	I55403	Pump to Filter Hose Assembly (JWP)	39.89	44.68
15	I55374	Pump to Filter Assembly (OptiFlo) ²	CALL	CALL
15	I55765	Pump to Filter Assembly (OptiFlo) ³	CALL	CALL
16		Pump	13.51	15.13
17	710009	Base Hardware Kit	13.14	14.72
NOT SHOWN				
	I55151	Kit, Flex Hose, 6 ft. ¹	81.18	90.92
	I55005	Kit, Flex Hose, 12 ft. ¹	107.13	119.99

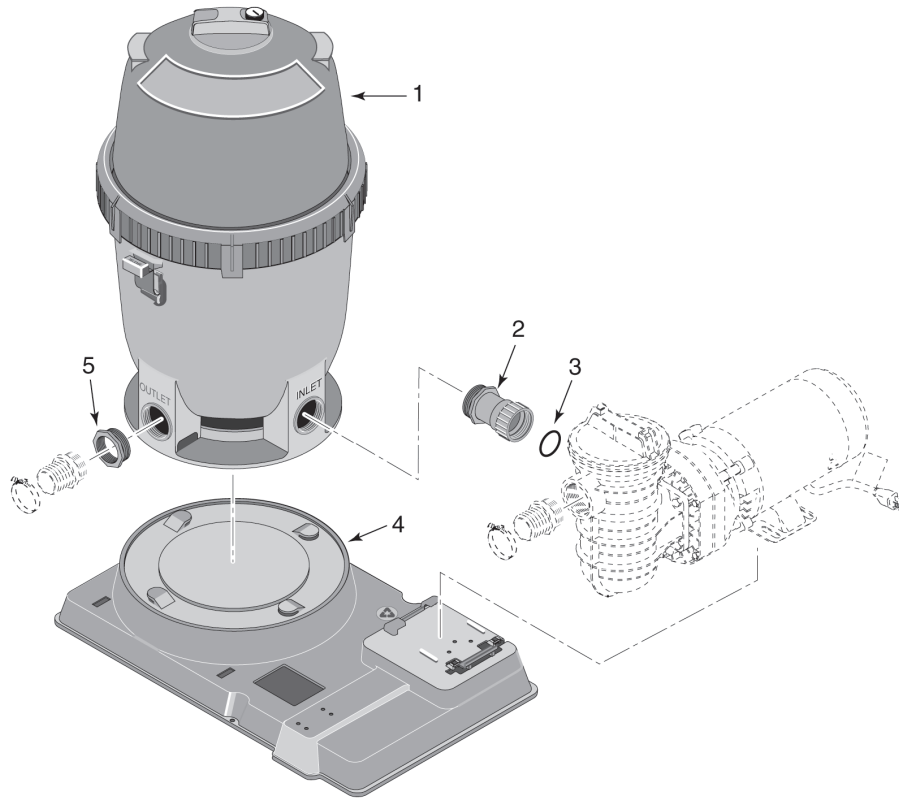
¹ Replacement Hose Kits include two (2) hoses, four (4) hose adaptors and four (4) hose clamps.

² When replacement OptiFlo pump is used on base I55333P and I55333CP.

³ When replacement OptiFlo pump is used on base I55331P and I55331CP.

PLM Filter Systems

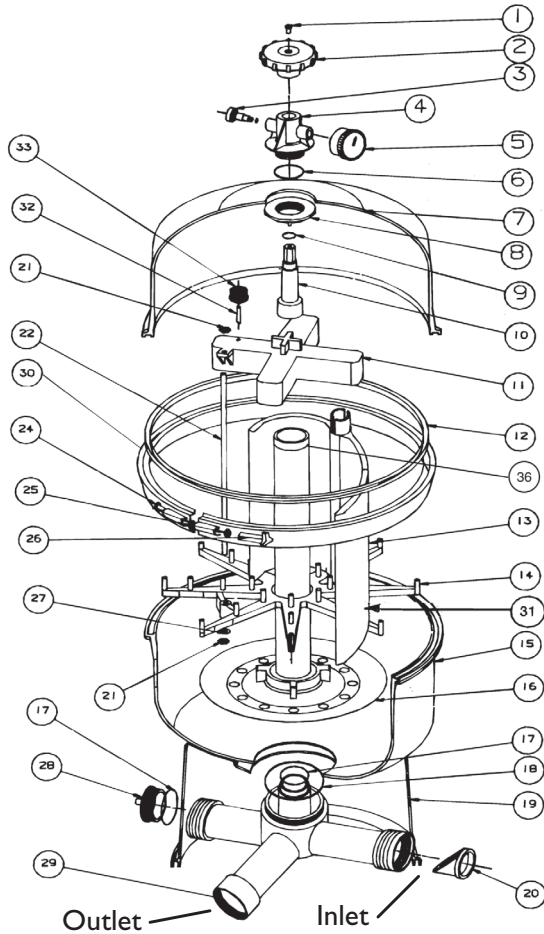
Replacement Parts for Systems manufactured prior to 2009



Item	Part No.	Description	US List	Can. List
PLM FILTER SYSTEMS				
1	PLM100	PLM100 Filter Tank Assembly	777.91	871.26
1	PLM150	PLM150 Filter Tank Assembly	891.10	998.03
1	PLD50	PLD50 Filter Tank Assembly	892.52	999.62
2	27001-0120	Union Half Assembly (JWP)	34.28	38.39
2	155765	Pump to Filter Assembly (OptiFlo)	CALL	CALL
3	U9-226	O-Ring	1.79	2.00
4	27001-0031	Platform Base	117.04	131.08
5	U78-820P	2 in. NPT x 1-1/2 in. NPT Reducer Bushing	10.18	11.40
NOT SHOWN				
	155151	Hose Assembly 1-1/2 in. x 6 ft. ('03 Models only)	81.18	90.92

Star™ Polymeric Filter Systems

Replacement Parts



Item	Part No.	Description	US List	Can. List
STAR FILTERS				
1	552472	Screw - flathead #12 x 1 in.	1.07	1.20
2	191472	Knob - engagement shaft	15.96	17.88
3	272515	Air bleeder w/o-ring	7.97	8.93
4	191475	Adapter - tank top	30.42	34.07
5	190059	Gauge - back mount pressure	34.18	38.28
6	155564	O-ring 47mm x 4mm	9.97	11.17
7	191954	Top with knob - tank ST35	165.36	185.20
7	191500	Top with knob - tank ST40/50 black	217.04	243.08
7	191509	Top with knob - tank ST80 black	317.26	355.33
8	191478	Nut - 7/8 in. - 8 in. buttress	7.81	8.75
9	191479	O-ring 7/8 in. x 1-1/8 in. x 1/8 in.	1.03	1.15
10	191955	Shaft - engagement ST35	CALL	CALL
10	191485	Shaft - engagement ST50/80	21.77	24.38
11	191950	Manifold assy.	97.41	109.10
12	174704	O-ring - tank	18.56	20.79
13	191321	Grid - ST35 13-1/8 in., 4 req.	29.65	33.21
13	191322	Grid - ST40/50 19-3/4 in., 4 req.	40.14	44.96
13	191510	Grid - ST80 26-1/4 in., 4 req.	49.52	55.46
14	191467	Retainer - grid btm.	45.81	51.31

Item	Part No.	Description	US List	Can. List
15	750009	Btm. - tank ST40/50 black	150.27	168.30
15	191511	Btm. - tank ST80 black	157.63	176.55
16	191942	Pipe-center w/diffuser ST35 w/o-ring	122.86	137.60
16	191483	Pipe-center w/diffuser ST40/50 w/o-ring	100.51	112.57
16	191512	Pipe-center with diffuser ST80 w/o-ring	57.71	64.64
17	191474	O-ring 1-3/4 in. x 2 in. x 1/8 in., 2 req.	0.74	0.83
18	191424	O-ring 3-1/2 in. x 3-7/8 in. x 3/16 in.	5.86	6.56
19	191423	Foot - tank	51.60	57.79
20	191437	Check valve assy.	44.99	50.39
21	98211400	Nut - hex 1/4-20 serrated s/s, 4 req.	2.03	2.27
22	191948	Rod - 1/4 in. x 15 in. s/s ST35, 2 req.	18.56	20.79
22	191430	Rod - 1/4 in. x 21-1/2 in. s/s ST40/50, 2 req.	19.27	21.58
22	191513	Rod - 1/4 in. x 28 in. ST80	24.11	27.00
24	152060	Bolt - 5/16 in. - 18 x 4-1/4 in. carriage	8.52	9.54
25	072173	Washer - flat 5/16 in. s/s	1.40	1.57
26	174882	Knob - band assy.	27.99	31.35
27	072172	Washer - lock 1/4 in. s/s, 2 req.	0.20	0.22
29	191469	Piping - btm. w/check valve order with locknut (191505)	158.68	177.72
33	191329	Strainer - air relief	9.80	10.98
36	191517	Center Pipe O-Ring	1.28	1.43

SYSTEM REPLACEMENT PARTS

191507	Filter - ST50 w/o foot	834.61	934.76
750016	Piping assy. Star systems (includes: piping, parts, & O-rings)	86.36	96.72
750014	Base D.E. system for ST35 & ST50 & ST80	177.22	198.49
155109	Nut 4 prong, 2 req.	0.25	0.28
354265	Screw, 2 req.	1.70	1.90
155151	Hose, 1-1/2 in. x 6 ft., filter/pump to pool	81.18	90.92
155005	Hose, 1-1/2 in. x 12 ft., filter/pump to pool	107.13	119.99
354571	O-ring (Quick Connect)	2.77	3.10

¹ Item 31, Grid assy./complete, consists of items 11, 13, 14, 21, 22, 27.

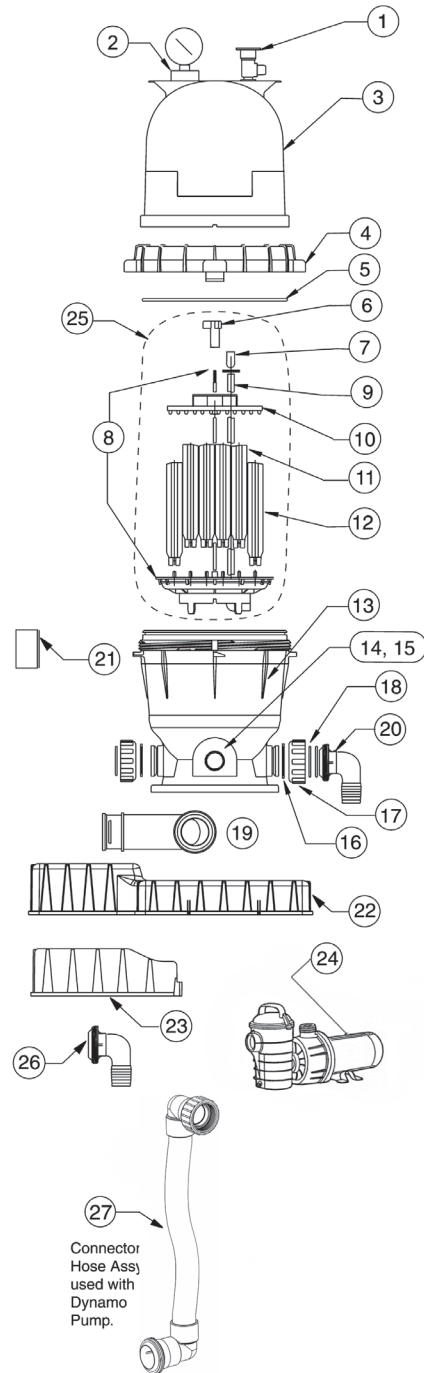
² Item 30, P/N 174880 Band assy./complete, consists of items 23, 24, 25, 26.

Warrior® Filter Systems

Replacement Parts



Item	Part No.	Description	US List	Can. List
WARRIOR FILTER SYSTEMS				
1	98209800	High Flow manual air relief valve (HFMARV)	27.29	30.56
2	190058	Gauge, pressure	34.18	38.28
3	190041	Lid, 44/88 GPM filter, almond	116.30	130.26
3	190042	Lid, 66 GPM filter, almond	108.90	121.97
4	59052900	Locking ring	78.14	87.52
5	87300400	Body O-ring	7.68	8.60
6	071404Z	Wing Nut	CALL	CALL
7	59016200	Air bleed sock kit	10.45	11.70
8	59022500	Tie rod / manifold assy., 44 GPM filter	57.67	64.59
8	59022501	Tie rod / manifold assy., 66 GPM filter	74.02	82.90
9	59011200	Air bleed tube, 44 GPM Filter	31.16	34.90
9	59011300	Air bleed tube, 66 GPM Filter	32.49	36.39
10	59023000	Top grid support	33.57	37.60
11	59009600	Lg. grid assy., 44 GPM filter	27.86	31.20
11	59009700	Lg. grid assy., 66 GPM filter	27.86	31.20
12	59005200	Sm. grid assy., 44 GPM filter	27.86	31.20
12	59005300	Sm. grid assy., 66/88 GPM filter	27.86	31.20
13	178562	Bottom, 44 GPM filter, almond	224.74	251.71
13	178563	Bottom, 66 GPM filter, almond	286.42	320.79
14	51516200	Drain cap ³	19.55	21.90
14	86202000	Plug 1-1/2 in. drain, w/O-ring ⁴	15.16	16.98
15	86300500	Drain cap gasket ³	4.34	4.86
15	51005000	O-ring, drain cap ⁴	5.50	6.16
16	39104500	Union nut "C" clip	1.49	1.67
17	98212200	Nut, union	8.64	9.68
18	071426	O-ring, union	1.28	1.43
19	170037	Fitting elbow pump connector ¹	23.23	26.02
20	39107400	Fitting elbow outlet connector ¹	15.63	17.51
21	51516100	Check valve kit	31.67	35.47
22	170058	Base assy. ¹	43.48	48.70
23	178541	Chlorinator base	27.28	30.55
24	OptiFlo® Pump, page 482, Dynamo® Pump, page 483			
25	59005800	Grid pack assy., 44 GPM	179.59	201.14
25	59005900	Grid pack assy., 66 GPM	217.08	243.13
26	79304700	Outlet connector w/chlorinator attachment	16.40	18.37
26	98200700	Bolt	2.97	3.33
26	155109	T-nut	0.25	0.28
27	175015	Pump/filter connector, Dynamo® ⁵	102.42	114.71
27	170046	Pump/filter connector, OptiFlo®	102.19	114.45



Connector Hose Assy used with Dynamo Pump.

¹ Used on filters manufactured after 3/98.

² Used on filters manufactured after 6/96.

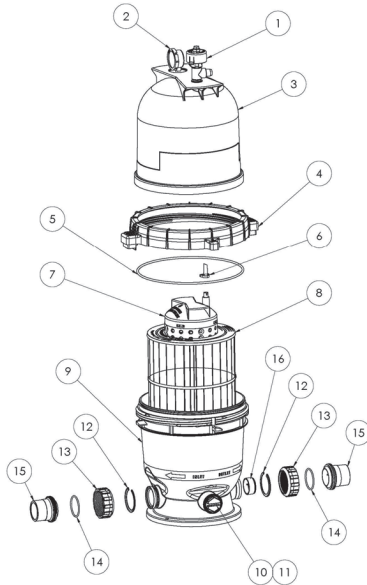
³ Used on filters manufactured before 11/98.

⁴ Used on filters manufactured after 11/98.

⁵ Used on filters manufactured with the Dynamo® Pump.

EasyClean™ Filter Systems

Replacement Parts



Item	Part No.	Description	US List	Can. List
EASYSYSTEM FILTER SYSTEMS				
1	98209800	High Flow Manual Relief Valve	27.29	30.56
2	190058	Pressure Gauge	34.18	38.28
3	178561	Lid, Almond	118.73	132.98
4	59052900	Locking Ring Assy	78.14	87.52
5	87300400	Body O-Ring	7.68	8.60
6	59016200	Air Bleed Sock Kit	10.45	11.70
7	59053600	Center Core, 60 GPM	93.35	104.55
8	196039	Cartridge Element, 60 GPM	120.00	134.40
8	196040	Cartridge Element, 90 GPM	176.21	197.36
9	178562	Tank Bottom, 60 GPM	224.74	251.71
9	178563	Tank Bottom, 90 GPM	286.42	320.79
10	86202000	Drain Cap with O-Ring	15.16	16.98
11	51005000	O-Ring (Drain Cap)	5.50	6.16
12	39104500	C-Clip (Union Nut)	1.49	1.67
13	98212200	Union Nut	8.64	9.68
14	071426	O-Ring Union	1.28	1.43
15	155372	Pump to Filter Assembly (OptiFlo)	46.10	51.63
16	39107400	Outlet Connector	15.63	17.51
17	5156100	Check Valve Kit	CALL	CALL
18	155333P	Systems Base	164.37	184.09
19	CALL	OptiFlo Pump	CALL	CALL
20	710009	Base Hardware Kit	13.51	15.13
NOT SHOWN				
	155151	Flex Hose Kit (6 ft.) ¹	81.18	90.92
	155005	Flex Hose Kit (12 ft.) ¹	107.13	119.99

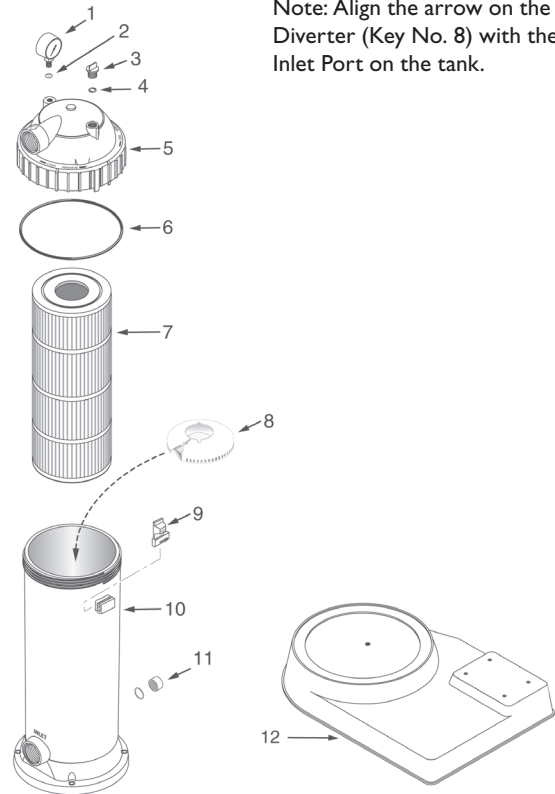
¹ Replacement Hose Kits include two (2) hoses, four (4) hose adapters and four (4) hose clamps.

PRD Filter Systems

Replacement Parts

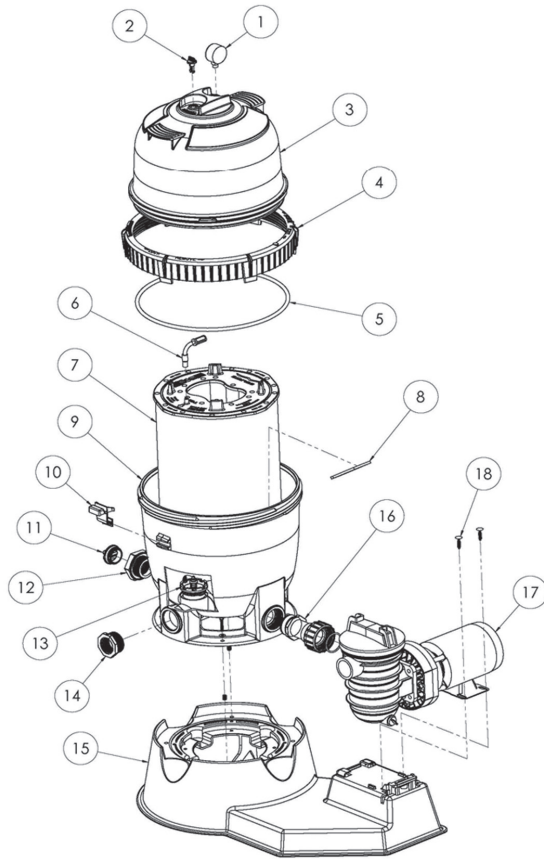


Item	Part No.	Description	US List	Can. List
PRD FILTER SYSTEMS				
1	15060-0000T	Pressure gauge	36.79	41.20
2	WC8-72D	Screen filter	2.33	2.61
3	25010-0004	Air relief valve	3.28	3.67
4	U9-359	O-Ring	CALL	CALL
5	25200-0103S	Tank lid assembly (includes Key No. 6)	97.31	108.99
6	25200-0011S	Tank lid O-ring with silicone lube	31.04	34.76
7	25200-0140S	Filter module	128.72	144.17
7	25200-0160S	Filter module	153.83	172.29
8	25200-0012	Diverter	CALL	CALL
9	25200-0007	Safety latch	CALL	CALL
10	25200-0001S	Filter tank	159.21	178.32
10	25200-0002S	Filter tank	185.74	208.03
11	32185-7074	Drain cap assembly with washer	5.03	5.63
12	25200-0010	Platform Base	88.47	99.09
ACCESSORIES				
	32155-4139	Operational Instruction Decal	CALL	CALL



PLD Filter Systems

Replacement Parts for Systems manufactured 2009 and beyond



Item	Part No.	Description	US List	Can. List
PLD FILTER SYSTEMS				
1	I5060-0000T	Pressure Gauge	36.79	41.20
2	25010-0200	Air Relief Valve Assembly	4.44	4.97
3	27001-0020S	Tank Shell Upper Half	236.56	264.95
4	27001-0054S	Posi-Lok Ring	157.95	176.90
5	27001-0061S	Body O-Ring	41.22	46.17
6	24800-0120	Air Bleed Assembly	16.49	18.47
7	27002-0030S	Filter Module - PLD50	275.71	308.80
8	27001-0011	Flapper Valve	12.40	13.89
9	27001-0009S	Tank Shell Lower Half	401.86	450.08
10	27001-0051	Safety Latch	11.12	12.45
11	27001-0022	1-1/2 in. NPT Plug	2.21	2.48
12	24900-0510	Adapter Fitting	21.48	24.06
13	27001-0130S	Spring Check Valve	17.15	19.21
14	U78-820P3	2 in. to 1-1/2 in. Pipe Reducer	10.17	11.39
15	I55331P	Systems Base (ABG/JWP)	164.72	184.49
15	I55331CP	Systems Base, CSA (ABG/JWP)	164.73	184.50
15	I553333P	Systems Base (OptiFlo)	CALL	CALL
15	I553333CP	Systems Base, CSA (OptiFlo)	CALL	CALL
16	I55403	Pump to Filter Hose Assembly (JWP)	39.89	44.68
16	I55374	Pump to Filter Assembly (OptiFlo) ²	39.89	44.68
16	I55765	Pump to Filter Assembly (OptiFlo) ³	CALL	CALL
17		Pump	CALL	CALL
18	710009	Base Hardware Kit	13.51	15.13
NOT SHOWN				
	I55151	Kit, Flex Hose, 6 ft. ¹	81.18	90.92
	I55005	Kit, Flex Hose, 12 ft. ¹	107.13	119.99

¹ Replacement Hose Kits include two (2) hoses, four (4) hose adapters and four (4) hose clamps.

² When replacement OptiFlo pump is used on base I55333P and I55333CP.

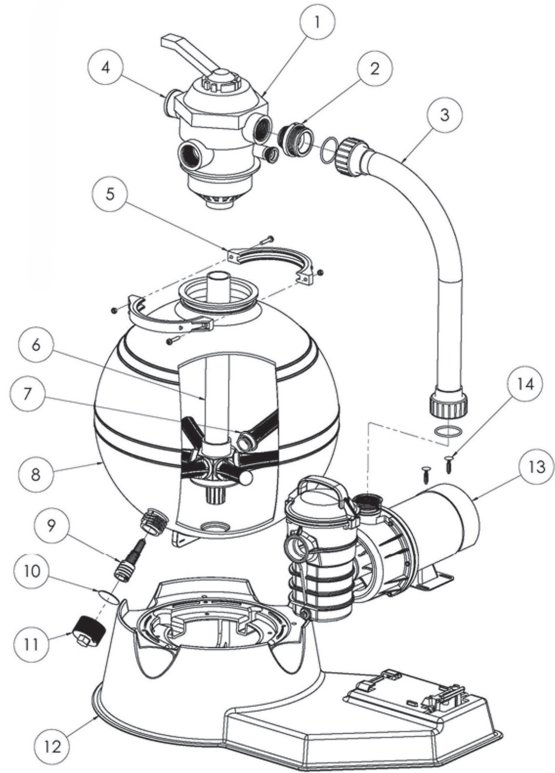
³ When replacement OptiFlo pump is used on base I55331P and I55331CP.

Meteor® Filter Systems

Replacement Parts for Systems manufactured 2009 and beyond

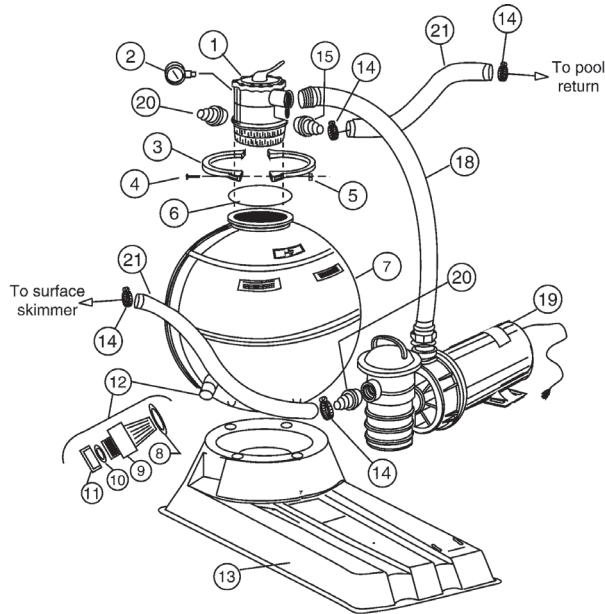


Item	Part No.	Description	US List	Can. List
METEOR FILTER SYSTEMS				
1	262506	Valve, 1-1/2 Inch, 6-Way	169.96	190.36
2	354588	Adaptor, NPT to Buttress	15.96	17.88
3	155712	Pump to Filter Assy. (Dynamo to Meteor 18 in.)	48.60	54.43
3	155709	Pump to Filter Assy. (Dynamo to Meteor 20 in.)	50.91	57.02
3	155714	Pump to Filter Assy. (Dynamo to Meteor 22 in.)	52.97	59.33
4	190059	Pressure Gauge	34.18	38.28
5	152165	Clamp Assembly	19.47	21.81
6	152223	Piping Assembly Meteor 18 in.	91.28	102.23
6	152224	Piping Assembly Meteor 20 in.	109.56	122.71
6	152225	Piping Assembly Meteor 22 in.	113.94	127.61
7	150084	Lateral – Meteor 18 in. & Meteor 20 in.	5.62	6.29
7	150085	Lateral – Meteor 22 in.	7.03	7.87
8	155655	Tank w/Drain – Meteor 18 in.	206.20	230.94
8	155656	Tank w/Drain – Meteor 20 in.	275.70	308.78
8	155657	Tank w/Drain – Meteor 22 in.	290.60	325.47
9	154711	Sand Drain	14.15	15.85
10	154715	Gasket (Sand Drain)	4.80	5.38
11	154712	Drain Cap	24.93	27.92
12	155333P	Systems Base	164.37	184.09
12	155333CP	Systems Base, CSA Pump	164.39	184.12
13		Dynamo Pump, page 483	CALL	CALL
14	710009	Base Hardware Kit	13.51	15.13
NOT SHOWN				
	155151	Kit, Flex Hose, 6 ft. ¹	81.18	90.92
	155005	Kit, Flex Hose, 12 ft. ¹	107.13	119.99



Meteor® Filter Systems

Replacement Parts for Systems manufactured prior to 2009



Item	Part No.	Description	US List	Can. List
METEOR FILTER SYSTEMS				
1	262506	MPV, 6-pos., 18, 20, 22 in. filter, 1-1/2 in. port ⁶	169.96	190.36
1	50118100	MPV, 8-pos., 18, 20 in. filter, 1-1/2 in. port ⁴	240.99	269.91
1	50118200	MPV, 8-pos., 22, in. filter, 1-1/2 in. port ⁴	209.89	235.08
2	190059	Gauge, pressure, rear connection	34.18	38.28
3	51020900	Clamp, multiport valve 3	42.17	47.23
3	152165	Clamp Assy (incl. Nuts & Screws) ⁵	19.47	21.81
4	98209000	Screw, clamp	1.63	1.83
5	98211400	Nut, clamp	2.03	2.27
6	51011900	O-ring, MPV, 22 in. filter ¹	6.91	7.74
6	51021700	MPV gasket, 18, 20 & 22 in. filters ²	15.21	17.04
7	58812120	Tank assy., 18 in. filter, almond ⁵	408.07	457.04
7	58812130	Tank assy., 20 in. filter, almond ⁵	588.97	659.65
7	58812140	Tank assy., 22 in. filter, almond ⁵	512.08	573.53
7	155656	Tank w/Drain – Meteor 20 in. ⁶	275.70	308.78
7	155657	Tank w/Drain – Meteor 22 in. ⁶	290.60	325.47
7	155655	Tank w/Drain – Meteor 18 in. ⁶	206.20	230.94
8	51005000	O-ring, drain/insp. fittings	5.50	6.16
9	86300300	Fitting, drain sand/water	8.60	9.63
9	154711	Sand Drain ⁵	14.15	15.85
10	86300500	Gasket, drain cap	4.34	4.86
10	154715	Drain Gasket	4.80	5.38
11	86300400	Cap, drain	4.34	4.86
11	154712	Drain cap	24.93	27.92
12	55007800	Drain assy., complete	19.52	21.86

Item	Part No.	Description	US List	Can. List
12	150055	Drain assy. ⁵	43.34	48.54
13	152901	Base (18 in., 20 in., 22 in.) ⁵	99.51	111.45
14	711004	Clamp, 1-1/2 in. worm hose	5.01	5.61
15	86201900	Elbow Hose Adapter, 1-1/2 in.	10.95	12.26
18	79302100	Hose assy., 18 in. filter	70.32	78.76
18	79302200	Hose assy., 20 in. filter	76.07	85.20
18	79302300	Hose assy., 22 in. filter	77.56	86.87
18	155662	18 in. Quick connect hose ⁵	44.44	49.77
18	155663	20 in. Quick connect hose ⁵	102.98	115.34
18	155664	22 in. Quick connect hose ⁵	107.11	119.96
18	86013000	Quick connect hose assy., 18 in. filter	68.50	76.72
18	86013090	Quick connect hose assy., 20 in. filter	73.05	81.82
18	86013100	Quick connect hose assy., 22 in. filter	77.61	86.92
19	Dynamo® Pump, see page 483			
20	711006	Hose adapter 1-1/2 in. x 1-1/2 in. NPT	5.54	6.20
20	150046	Hose adapter 1-1/2 in. NPT CHL conn.	7.61	8.52
21	155151	Hose, 1-1/2 in. x 6 ft., filter/pump to pool	81.18	90.92
21	155005	Hose, 1-1/2 in. x 12 ft., filter/pump to pool	107.13	119.99
NOT SHOWN				
	55025700	Lateral underdrain, 18, 20, 22 in. filters, 8 per filter	5.38	6.03
	55027500	Standpipe / lateral assy., 18 in. filter	73.59	82.42
	150084	Lateral, Long (18 in., 20 in.) ⁶	5.62	6.29
	150085	Lateral, XLong (22 in.) ⁶	7.03	7.87
	152223	Standpipe lateral assy. 18 in. ⁶	91.28	102.23
	152224	Standpipe lateral assy. 20 in. ⁶	109.56	122.71
	152225	Standpipe lateral assy. 22 in. ⁶	113.94	127.61
	55027600	Standpipe / lateral assy., 20 in. filter	73.59	82.42
	55027700	Standpipe / lateral assy., 22 in. filter	74.92	83.91
	155051	Funnel, sand guide	5.67	6.35
	85019300	Backwash adapter, 1-1/2 in. NPT x brb.	11.94	13.37
	85019000	Backwash sight glass, 18 & 20 in. filter	16.95	18.98
	85019100	Backwash sight glass, 22 in. filter	16.95	18.98
	354571	O-ring (Quick Connect)	2.77	3.10
	155167	Kit Bag Systems	220.09	246.50

¹ Used on filters manufactured before 4-95.

² Used on filters manufactured after 4-95.

³ Used on filters manufactured after 12-15-95.

⁴ Used on filters manufactured before 4-2004.

⁵ Used on filters manufactured after 6-2004.

⁶ Used on filters manufactured after 10-2004.

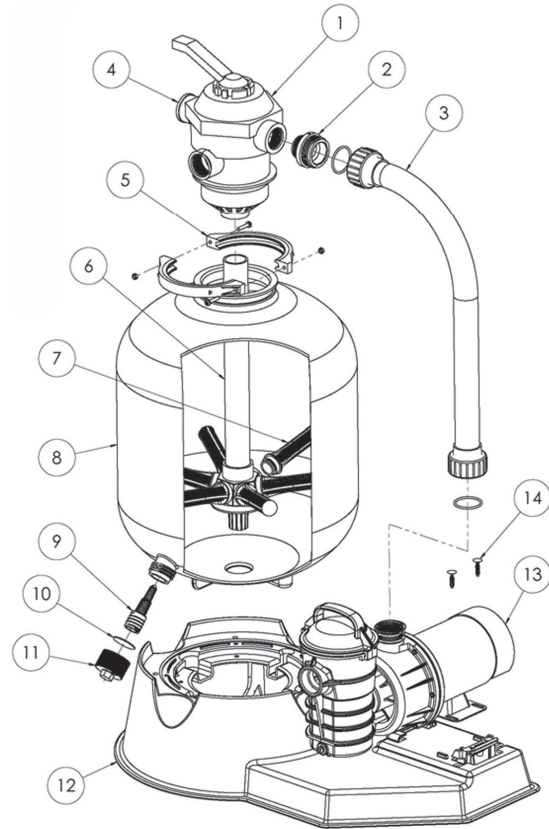
Sand Dollar® Filter Systems

Replacement Parts for Systems Manufactured 2009 and beyond



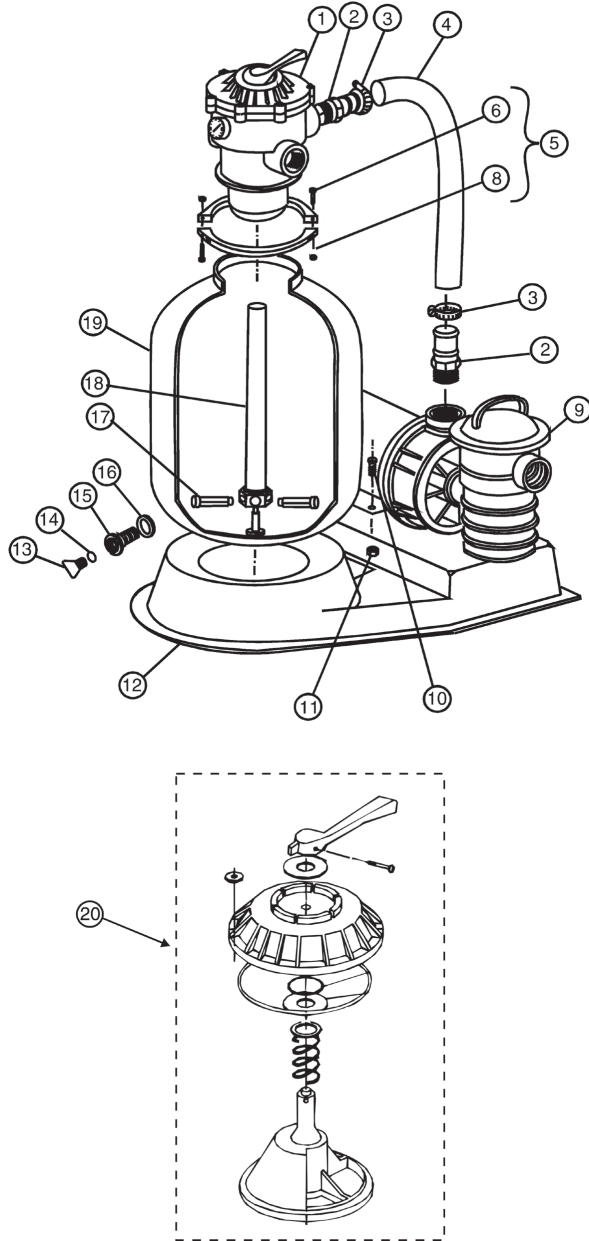
Item	Part No.	Description	US List	Can. List
SAND DOLLAR FILTER SYSTEMS				
1	262506	Valve, 1-1/2 Inch, 6-Way	169.96	190.36
2	354588	Adaptor, NPT to Buttress	15.96	17.88
3	155709	Pump to Filter Assembly (Dynamo to SD35)	50.91	57.02
3	155710	Pump to Filter Assembly (Dynamo to SD40)	53.22	59.61
3	155711	Pump to Filter Assembly (Dynamo to SD60)	56.05	62.78
4	190059	Pressure Gauge	34.18	38.28
5	152165	Clamp Assembly	19.47	21.81
6	152229	Piping Assembly – SD35	100.86	112.96
6	152228	Piping Assembly – SD40	93.11	104.28
6	152227	Piping Assembly – SD60	108.24	121.23
7	150084	Lateral – SD 35 & SD 40	5.62	6.29
7	150085	Lateral – SD60	7.03	7.87
8	145339	Tank w/Drain – SD35	222.45	249.14
8	145341	Tank w/Drain – SD40	295.10	330.51
8	145343	Tank w/Drain – SD60	408.58	457.61
9	154711	Sand Drain	14.15	15.85
10	154715	Gasket (Sand Drain)	4.80	5.38
11	154712	Drain Cap	24.93	27.92
12	155333P	Systems Base	164.37	184.09
12	155333CP	Systems Base, CSA Pump	164.39	184.12
13	Dynamo Pump, pg 483			
14	710009	Base Hardware Kit	13.51	15.13
NOT SHOWN				
	155151	Kit, Flex Hose, 6 ft. ¹	81.18	90.92
	155005	Kit, Flex Hose, 12 ft. ¹	107.13	119.99

¹ Replacement Hose Kits include two (2) hoses, four (4) hose adaptors and four (4) hose clamps.



Sand Dollar® Filter Systems

Replacement Parts for Systems Manufactured prior to 2009



Item	Part No.	Description	US List	Can. List
4	154895	Hose 30 in. clear/grey spiral, SD 60	39.73	44.50
5	152165	Clamp assy. - aboveground system ¹	19.47	21.81
6	152168	Screw #M6 x 1 pan hd. Phillips s/s, 2 req. ¹	1.78	1.99
8	152167	Nut #M6 s/s, 2 req. ¹	1.28	1.43
9	Dynamo® Pump, see page 483.			
10	354265	Screw - 1/4 in.-18 hex washer hd., 2 req. ²	1.70	1.90
11	155109	Nut-T4 prong 5/16 in.-18, req. 2	0.25	0.28
12	152901	Base assy. ²	99.51	111.45
13	154699	Plug-drain 1/4 in. NPT wing ⁵	CALL	CALL
14	192115	O-ring-drain plug (1/16 in. x 1/2 in. i.d.) ⁵	1.00	1.12
15	154710	Drain, sand 1 in. 5 ACME ⁵	8.31	9.31
15	150055	Drain Kit ⁴	43.34	48.54
16	154713	Gasket, sand drain ³	1.28	1.43
17	155007	Lateral - SD 35, 8 req.	5.71	6.40
17	152290	Lateral - SD 40 & 60, 8 req.	5.96	6.68
17	150084	Lateral - SD 35, SD 40 ⁴	5.62	6.29
17	150085	XLong Lateral SD 60 ⁴	7.03	7.87
18	155504	Assy.-SD 35 internal piping	40.59	45.46
18	155062	Assy.-SD 40 internal piping	37.70	42.22
18	155532	Assy.-SD 60 internal piping	98.35	110.15
19	145324	Tank w/internals-SD 35 almond	345.73	387.22
19	145327	Tank w/internals-SD 40 almond	348.96	390.84
19	145330	Tank w/internals-SD 60 almond	467.23	523.30
20	272531	HiFlow 1-1/2 in. top valve assy.	127.87	143.21
NOT SHOWN				
	155151	Hose, 1-1/2 in. x 6 ft., filter/pump to pool	81.18	90.92
	155005	Hose, 1-1/2 in. x 12 ft., filter/pump to pool	107.13	119.99
	154712	1-1/2 in. drain cap	24.93	27.92
	154715	O-Ring for 1-1/2 in. drain cap	4.80	5.38
	155167	Kit Bag Systems	220.09	246.50

Item	Part No.	Description	US List	Can. List
SAND DOLLAR FILTER SYSTEMS				
1	262506	6 Way Valve assy.	169.96	190.36
2	711006	Adapter - 1-1/2 in. hose, 2 req.	5.54	6.20
2	150046	Adapter w/ chlorinator conn., 2 req.	7.61	8.52
3	711004	Clamp-hose, 3 req.	5.01	5.61
4	154893	Hose 21-1/2 in. clear/grey spiral, SD 35	35.46	39.72
4	154894	Hose 26 in clear/grey spiral, SD 40	38.00	42.56

¹ P/N 152165 (clamp assy.) consists of 2 each of the following: P/N 152166 (clamp half), P/N 152167 (nut) and P/N 152168 (screw).

² P/N 152901 (aboveground base) consists of P/N 152900 (base) and 2 each of the following: P/N 155109 (T4 nuts) and P/N 354265 (screw).

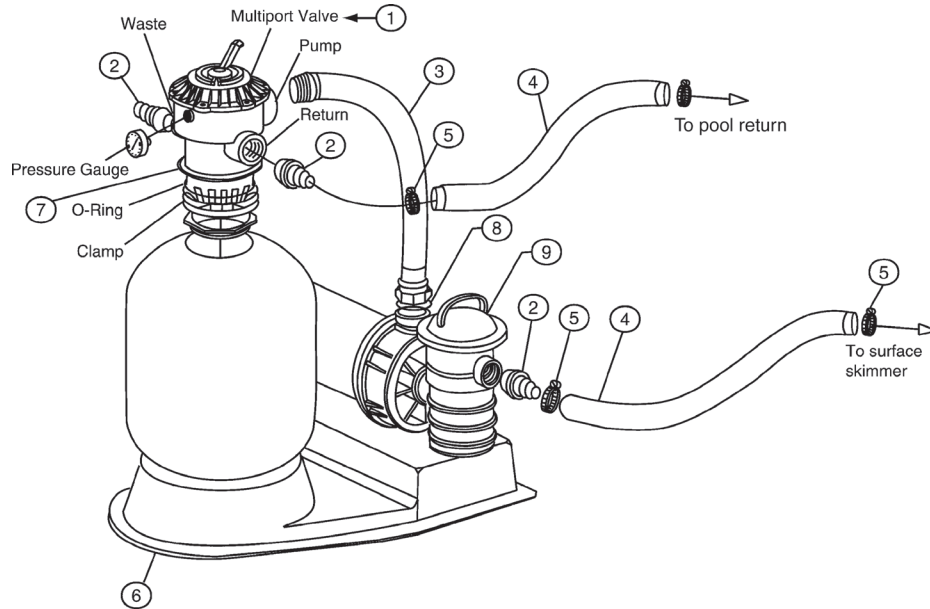
³ P/N 192040 O-ring used on tanks manufactured after 1/1/03.

⁴ Manufactured after 10/04.

⁵ Manufactured before 10/04.

Tagelus® Filter Systems

Replacement Parts

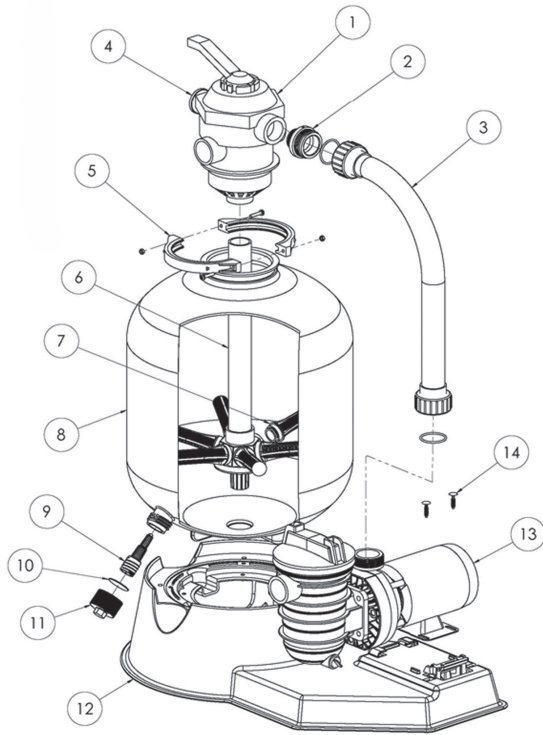


Item	Part No.	Description	US List	Can. List
TAGELUS FILTER SYSTEMS				
1	262506	Valve 1-1/2 in. 6-way clamp style	169.96	190.36
1	261124	Valve 1-1/2 in. 6-way "V" thread-TA ¹	177.80	199.14
2	711006	Hose adptr. tapered, 3 req.	5.54	6.20
3	155285	PVC hose w/quick connect TA35 & TA35D	CALL	CALL
3	155278	PVC hose w/quick connect TA40 & TA40D	49.70	55.66
3	155283	PVC hose w/quick connect TA50 & TA50D	51.10	57.23
4	155151	Hose, 1-1/2 in. x 6 ft., filter/pump to pool	81.18	90.92
4	155005	Hose, 1-1/2 in. x 12 ft., filter/pump to pool	107.13	119.99
5	711004	Hose clamp 1-1/2 in. wire type, 4 req.	5.01	5.61
6	152901	Base assy.	99.51	111.45
7	152165	Clamp-TAD system	19.47	21.81
8	354571	O-ring	2.77	3.10
9		Dynamo® Pump, see page 483		
NOT SHOWN				
	155161	Teflon tape	2.07	2.32

¹ For filters manufactured before 12-1-91.

Cristal-Flo™ II Filter Systems

Replacement Parts for Systems manufactured 2009 and beyond



Item	Product	Description	US List	Can. List
CRISTAL-FLO II FILTER SYSTEMS				
1	262506	Valve, 1-1/2 Inch, 6-Way	169.96	190.36
2	354588	Adaptor, NPT to Buttress	15.96	17.88
3	155726	Pump to Filter Assy (JWP/ABG to 16 in. Tank)	50.91	57.02
3	155727	Pump to Filter Assy (JWP/ABG to 19 in. Tank)	53.22	59.61
3	155728	Pump to Filter Assy (JWP/ABG to 22 in. Tank)	56.05	62.78
3	155709	Pump to Filter Assy (Dynamo/OptiFlo to 16 in. Tank)	50.91	57.02
3	155710	Pump to Filter Assy (Dynamo/OptiFlo to 19 in. Tank)	53.22	59.61
3	155711	Pump to Filter Assy (Dynamo/OptiFlo to 22 in. Tank)	56.05	62.78
4	190059	Pressure Gauge	34.18	38.28
5	152165	Clamp Assembly	19.47	21.81
6	152229	Piping Assembly – 16 in. Tank	100.86	112.96
6	152228	Piping Assembly – 19 in. Tank	93.11	104.28
6	152227	Piping Assembly – 22 in. Tank	108.24	121.23
7	150084	Lateral – 16 in. & 19 in. Tanks	5.62	6.29
7	150085	Lateral – 22 in. Tanks	7.03	7.87
8	145364	Tank w/Drain – 16 in. Tank	222.45	249.14
8	145365	Tank w/Drain – 19 in. Tank	295.10	330.51
8	145366	Tank w/Drain – 22 in. Tank	408.58	457.61
9	154711	Sand Drain	14.15	15.85
10	154715	Gasket (Sand Drain)	4.80	5.38
11	154712	Drain Cap	24.93	27.92
12	155333P	Systems Base	164.37	184.09
12	155333CP	Systems Base, CSA Pump	164.39	184.12
13		Pump	CALL	CALL
14	710009	Base Hardware Kit	13.51	15.13
NOT SHOWN				
	155151	Kit, Flex Hose, 6 ft. ¹	81.18	90.92
	155005	Kit, Flex Hose, 12 ft. ¹	107.13	119.99
	155767	Conn Kit, Pump to Filter All sizes	CALL	CALL

¹ Replacement hose kits include (2) hoses, (4) hose adapters and (4) hose clamps.

Waterford™ Filter Systems

Replacement Parts for Systems manufactured before 2009



MODELS

15 in. Filters:

JSAL15D

JSAL15E

JSALS15E

18 in. Filters:

JSAL180D

JSAL180E

JSALS180E

JSAL180F

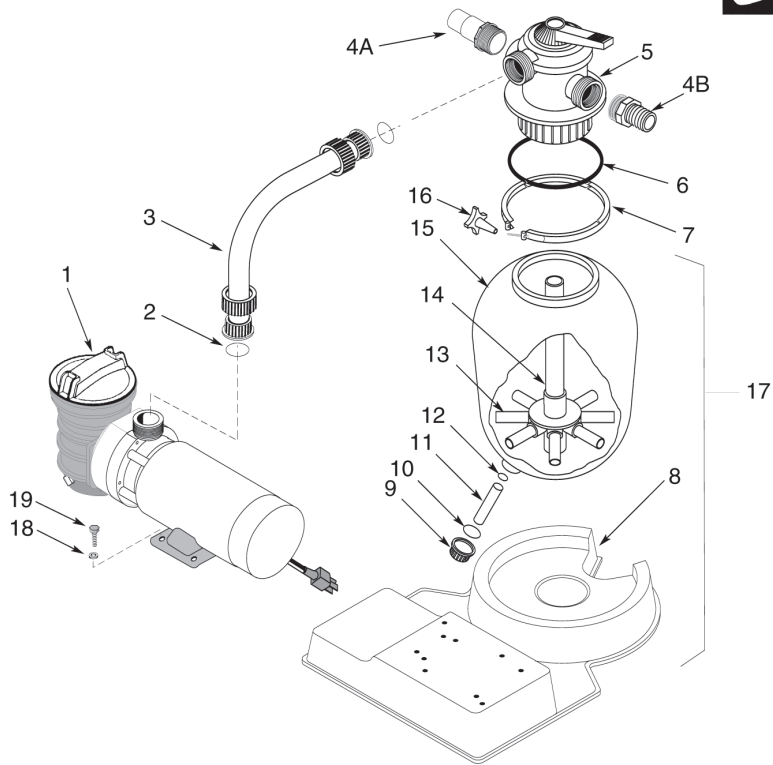
21 in. Filters:

JSAL210D

JSAL210E

JSAL210F

JSALS210F



Item	Part No.	Description	US List	Can. List
WATERFORD FILTER SYSTEMS				
1		Pump	1.79	2.00
2	U9-226	O-Ring	90.14	100.96
3	24203-0036	Hose Assembly (Includes Item No. 2) - 15 in. Filter (ABG/JWP)	94.92	106.31
3	24203-0033	Hose Assembly (Includes Item No. 2) - 18 in. Filter (ABG/JWP)	97.67	109.39
3	24203-0034	Hose Assembly (Includes Item No. 2) - 21 in. Filter (ABG/JWP)	5.01	5.61
4A	711004	Hose Adapter	7.35	8.23
4B	14962-0012	Sight Glass	CALL	CALL
5	WC112-148	Multiport Valve	13.55	15.18
6	U9-369	O-Ring, Tank Flange	145.98	163.50
7	WC119-87	V-Clamp with Knob	144.92	162.31
8	24201-0055	Pedestal Platform	22.48	25.18
9	14965-0025	Drain Cap	2.64	2.96
10	U9-371	O-Ring, Drain Cap	6.65	7.45
11	24201-0058	Drain Lateral Tube	1.44	1.61
12	U9-370	O-Ring, Lateral Tube	7.65	8.57
13	24600-0003	Lateral Tube	82.30	92.18
14	24200-0110	Collector Hub Assembly 15 in. Filter	84.12	94.21

Item	Part No.	Description	US List	Can. List
14	WC137-516P	Collector Hub Assembly 18 in. Filter	86.72	97.13
14	WC137-517P	Collector Hub Assembly 21 in. Filter	CALL	CALL
15	I50106	Tank	CALL	CALL
15	I50107	Tank	CALL	CALL
15	I50108	Tank	CALL	CALL
16	WC36-22	Clamp Knob	10.52	11.78
18	U43-60SS	Washer 1/4 in.	1.00	1.12
19	U30-52SS	Screw 1/4-20 x 3/4 in. Lg.	0.78	0.87
NOT SHOWN				
	155151	Hose, 1-1/2 in. x 6 ft. Lg. ²	81.18	90.92
	24201-0043	Sand Shield	12.11	13.56
	32155-4115A	Nameplate Decal 15 in. Filter	CALL	CALL
	32155-4115B	Nameplate Decal 15 in. Filter	CALL	CALL
	32155-4115C	Nameplate Decal 15 in. Filter	CALL	CALL
	32165-4030	Clamp Decal, Warning	CALL	CALL
	32155-4112	Information Decal	CALL	CALL
	C198-5	Union Half Package	33.00	36.96
	155764	Conn Kit, Pump to Filter All sizes	CALL	CALL

Accessories

For Aboveground Systems

We recommend the use of GFCI with all filter systems.

Part No.	Description	US List	Can. List
ACCESSORIES			
79137800	3 ft. Standard cord	51.18	57.32
155234	3 ft. cord with twist lock	64.46	72.20
155151	1-1/2 in. x 6 ft. hose kit, (to and from pool)	81.18	90.92
155005	1-1/2 in. x 12 ft. hose kit, (to and from pool)	107.13	119.99
150046	Hose adapter 1-1/2 in. NPT with Chlorinator connector	7.61	8.52
542413	Aboveground wall fitting 1-1/2 THD x 1-1/2 THD-white	10.59	11.86
542414	Aboveground wall fitting 1-1/2 THD x 1-1/2 socket-white	10.59	11.86
98600000	AquaLuminator aboveground light	206.37	231.13
98610002	AquaLuminator aboveground light (Canada CSA) certified	194.93	218.32
K50600	E-Z Vac Pool Cleaner	287.30	321.78
542090	Sand Vac – empties a sand filter in 10 min for repair, refilling or removal	155.57	174.24
R171016	300 Series Off-Line Chlorinator Feeder	105.55	118.22
98605300	Quasar Non-Return Light	208.32	233.32
79203100	Adapter to connect AquaLuminator to cleaner	50.36	56.40
79100000	Fountain attachment, fits all AquaLuminator models	CALL	CALL
79202900	Hard plumbing adapter	7.25	8.12



AquaLuminator 98600000



3 ft. Twist Lock cord 155234



6 ft. Hose Kit 155151
12 ft. Hose Kit 155005



Quasar Non-return light for aboveground pools
98605308



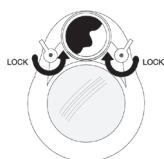
300 Series Chlorinator/Feeder R171016



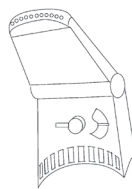
Sand Vac 542090



Hard Plumbing Adapter



Pressure Cleaner Adapter



Fountain Attachment