



Automation (Control Systems)

Automation (Control Systems)
for Pools and Spas

IntelliTouch® Systems

...advanced automation systems for pool and spa



Featured Highlights

- ThermalFlo™ Heat Pump Cooling Support
- iS10 Spa-side control of IntelliFlo® pump.
- MagicStream® Laminar support
- Control panel lock-out

IntelliTouch® automation offers superior control systems from small to the most ambitious pool and spa designs including water features and spectacular lighting effects. IntelliTouch automation systems offer innovative technology and a wide range of wireless and wired control panels that are easy to program with simple menus to enable pool owners to create and change programs without complication. Users can choose the Wi-Fi enabled Tablet, the compact Personal Digital Assistant (PDA) or the MobileTouch® wireless (900MHz) control panel to complete their pool and spa automation system.

IntelliTouch offers advanced control technology to suite individual needs including:

- **ScreenLogic® User Interfaces** – Enables IntelliTouch users to control their pool and spa features using wireless color touch screen devices including PDA and Tablets. ScreenLogic systems now have advanced features such as remote monitoring and control over the internet and email alerts for specific events. Other wired interface options are also available to control pool and spa features via a desktop or laptop PC from within the home or on the road.
- **Salt Chlorine Feature** – Enables IntelliTouch users to control and monitor popular Salt Chlorine Generators including Pentair's IntelliChlor®, Goldline®, AutoPilot®, and AutoClear® from the IntelliTouch Indoor Control Panel or MobileTouch® wireless control panel. Users do not have to adjust the salt chlorine generator at the equipment pad.
- **Support for IntelliFlo® pumps** – IntelliFlo® is the intelligent swimming pool pump that is changing all the rules. Adaptable to any application up 230 volts and 160 gallons per minute, you simply program IntelliFlo's speed to suit the application. IntelliFlo then dials in the perfect power factor. IntelliFlo constantly monitors water flow and electrical current, making sure that the filtration system is operating at peak efficiency. And that means energy savings never before possible – up to 90% over conventional pumps.
- **Advanced Color Lighting** – Enables users to experience a world of lighting animation when teamed up with Pentair IntelliBrite®, SAm®, SAL®, and/or FIBERworks®. One of the most dramatic innovations is the *Swimming Colors* feature in which colors appear to swim through the water, pouring into one another.

Technical Note: Lights must be connected to separate *Auxiliary Circuits* for *Swimming Colors* to function.

IntelliTouch systems offer the flexibility to handle from 5 to 40 circuits that can be used to control any combination of pumps, lights, water features, etc. As an added benefit, user-configurable circuits (**Feature Circuits**) can also be used to control these combinations of features and more. Feature Circuits even add Macro possibilities, where any number of circuits can be combined on a single button. This gives the pool owner the ability to set up “themes” with custom names all with one press of a single button.

IntelliTouch users can also dim any high voltage incandescent light such as Pentair Amerlite® and SpaBrite® up to eight levels using the IntelliTouch Dimmer Module (P/N 520406). The dimmer module supports multiple lights from 100 watts up to 1,000 watts and installs in a standard relay location. Any number of dimmers (up to 10 maximum) may be used with a maximum combined load of 4,000W in a single Load Center.

IntelliTouch® Enclosure Kits

Ordering an IntelliTouch System – Step 1:



Featured Highlights

- Load Center – Includes built-in sub panel (150 AMPS) breaker base capable of holding up to ten 1 inch breakers. Also includes five 25 AMP 3 HP relays, 120V/240V transformer with secondary side circuit protection. Multiple knockouts for 1/2 inch to 1-1/4 inch conduit are supplied as well as a GFCI receptacle side knock out. The Load Center provides ample space for all high and low voltage wiring needs.
- Power Center – Offers a smaller footprint than the Load Center. The Power Center does not include a circuit breaker base. Users should choose this enclosure if they already have existing circuit breakers/sub-panel for their equipment.



Power Center
(P/N 521214)



Load Center
(P/N 521213)

New for 2010 – Pentair has a new Load center and Power Center that features more space for wiring, space for 10 breakers, more knockouts, 150 Amps limit and, for added convenience, IntelliTouch enclosures can now be ordered with the IntelliChlor transformer integrated so a separate power center is no longer required.

Ordering Information

Product	Description	3 HP Relays Std. / Max.	Number of Circuit Breaker Spaces	Transformer Voltage	Size
INTELLITOUCH ENCLOSURE KITS WITH INTELLICHLOR TRANSFORMER					
521213	Load Center	5 / 10	10	115V / 230V	26 in. H x 17 in. W x 5-1/4 in. D
521214	Power Center	5 / 10	None	115V / 230V	20 in. H x 17 in. W x 5-1/4 in. D
INTELLITOUCH ENCLOSURE KITS WITHOUT INTELLICHLOR TRANSFORMER					
521215	Load Center	5 / 10	10	115V / 230V	26 in. H x 17 in. W x 5-1/4 in. D
521216	Power Center	5 / 10	None	115V / 230V	20 in. H x 17 in. W x 5-1/4 in. D

IntelliTouch® Personality Kits

Ordering an IntelliTouch System – Step 2:



i5+3 Personality Kit
(for single body of water)



i9+3 Personality Kit
(shared equipment)



Featured Highlights

- **Shared Equipment:** Pool and spa combinations with shared filtration system – Pool owners can enjoy the convenience of motorized valves for water flow separation between pool and spa
- **Dual Equipment:** Pool and Spa Dual Sets of Equipment – The IntelliTouch® i10+3D system provides advanced automation for a pool and spa using two separate sets of equipment. The IntelliTouch Personality Kit controls ten pump and/or lighting circuits and two heaters.
- **Single Equipment:** Pool Only or Spa Only Applications – The IntelliTouch i5+3S and i9+3S provide advanced automation for a single body of water

There are six Personality Kit models available for various pool and spa combinations. Each Personality Kit provides complete pool and spa controls that are fully programmable. Every circuit has a countdown timer, ability to do one-time-use programs, salt generation interface for popular salt chlorinators, spectacular colored pool/spa lighting effects, along with solar control capabilities. In addition, there are various options available including light dimming, smart home interface, spa-side remote switches, valve actuators for water flow control, additional indoor wired or wireless user interface control panels, and even telephone remote control.

Ordering Information

Product	Model Number	High Voltage Circuits	3 HP Relays Kit / Total *	Feature Circuits	Valve Actuators Std. / Opt. / w/Module
POOL/SPA – SHARED EQUIPMENT					
<i>Pump, Filter & Heater shared between Pool and Spa by two automated 3-Way Valves.</i>					
521219	i5+3	Filter + 4 Aux	0 / 5	10	2 / 4 / 7
521220	i7+3	Filter + 6 Aux	2 / 7	10	2 / 4 / 7
521221	i9+3	Filter + 8 Aux	4 / 9	10	2 / 4 / 7
POOL/SPA – DUAL EQUIPMENT					
<i>Two Pumps, Two Filters & Two Heaters for separate Pool and Spa.</i>					
521222	i10+3D	2 Filters + 8 Aux	5 / 10	10	0 / 2 / 5
POOL OR SPA – SINGLE BODY OF WATER					
<i>Pump, Filter & Heater for an individual Pool or Spa.</i>					
521223	i5+3S	Filter + 4 Aux	0 / 5	10	0 / 2 / 5
521224	i9+3S	Filter + 8 Aux	4 / 9	10	0 / 2 / 5
EXPANSION KITS					
521225	i5X Expansion Kit		0 / 5	0	0 / 2 / 5
521226	i10X Expansion Kit		5 / 10	0	0 / 2 / 5

* Load Center or Power Center, purchased separately, includes five 3 HP relays.

Note: i5 and i5S are now i5+3 and i5+3S.

Note: Valve actuators now come with 25 ft. cables for wiring convenience.

Note: All IntelliTouch systems can be configured using wireless and/or wired user interfaces such as a PDA and/or wireless Tablet color touch screen device. IntelliTouch ScreenLogic® Kits are ordered separately and are described on the next page.

IntelliTouch® Interface Kits

Ordering an IntelliTouch System – Step 3:



Color Touch Screen



MobileTouch Wireless Remote



Indoor Control Panel



Wireless Tablet Color Touch Screen



iPhone®



iPad®



iPod Touch®

One or more of the following Standard or ScreenLogic® Interface Kits can be used with IntelliTouch Personality Kits. For example, multiple PDAs, Tablets, or Indoor Control Panels can be mixed or matched throughout the home. ScreenLogic systems now have advanced features such as remote monitoring and control over the internet and email alerts for specific events. The Interface options include:

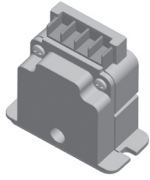
Ordering Information

Product	Description
STANDARD INTERFACES	
520138	Indoor Control Panel – 3-3/4 in. monochrome backlit LCD. Wired to the Load or Power Center.
520906	MobileTouch® – Wireless control panel with transceiver. 3-3/4 in. monochrome backlit LCD.
SCREENLOGIC INTERFACES	
520500	NEW: iPhone/ iPad/iPod Touch Interface Kit – Includes a Protocol Adapter and wireless router. Allows control of IntelliTouch pool/spa systems via local wifi signal or remotely via cellular network. Also includes ScreenLogic Connect CD for use on up to four windows computers.
520501	iTC25 Kit – Includes Wireless Personal Digital Assistant (PDA) with color touch screen custom configured for IntelliTouch systems, wireless router, and a Protocol adapter.
520502	iTC35 Kit – Includes in-wall color touch screen with Ethernet (RJ45) connection a Protocol adapter and wireless router. The Touch screen device is custom configured for IntelliTouch systems.
520503	iTC45 Kit – Includes wireless Tablet with color touch screen, a Protocol Adapter, and wireless router. The Tablet device is custom configured for IntelliTouch systems.
SCREENLOGIC ACCESSORIES	
520639	ScreenLogic Wireless Connection Kit – Includes two radio transmitters that eliminate the need to run cable from the Load Center into the home where the protocol adapter and wireless router are located.
520854Z	ScreenLogic Video and Lighting Protocol Adapter – This advanced Protocol adapter compliments the standard protocol adapter that ships with the ScreenLogic Kits 520500, 520501, 520502, and 520503. This protocol adapter adds Panasonic video camera support (up to 4 sold separately) and UPB lighting support (sold separately).

Note: The above ScreenLogic Kits require a 4-wire, 22 gauge wiring connection from the IntelliTouch Load Center to the protocol adapter within the home. The ScreenLogic Wireless Connection Kit (P/N 520639) can be used to eliminate the need to run this wire where impossible or impractical to do so.

Note: Call for availability and pricing on all IntelliTouch ScreenLogic models. In-wall and Tablet color touch screen size may vary. Specifications are subject to change.

IntelliTouch® Accessories



IntelliTouch Dimmer Module



Load Center



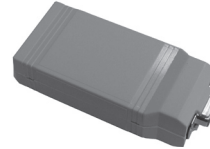
QuickTouch Remote



iS10 Spa-Side Remote



Outdoor Control Panel
(installs in the Load or Power Center)



i-Link Home Automation Adapter

Featured Highlights

iS10 Ten Function Spa-Side Remote – Adds the ultimate in spa-side luxury, with temperature display, thermostatic temperature control, and up to ten control circuits. For use with IntelliTouch® control systems. Each model includes two bisque colored faceplates for surface mounting or recessed-mounting. For recessed mounting order mud box. Optional faceplate kits provide additional color choices in bisque, tan, gray, and black.

Ordering Information

Product	Description
INTELLITOUCH ACCESSORIES	
520442	i-Link Home Automation Adapter Interface for IntelliTouch® – Enables homeowners using Home Automation systems such as Elan®, Crestron®, AMX®, Vantage™, Lutron® and others to control IntelliTouch basic features via their Home Automation control interface. Call for other Home Automation system compatibility.
520406	IntelliTouch Dimmer Module – Enables users to dim their Amerlite® and SpaBrite® lights up to eight levels (30% to 100%). Each dimmer module supports multiple lights from 100 watts up to 1,000 watts combined load using 120VAC (220VAC not supported). For example, a 500W and 100W Amerlite (total 600W) could be used with one dimmer module. Installs in a standard relay location. Any number of dimmers (up to 10 maximum) may be used with a maximum combined load of 4,000W. NOTE: Expansion Center Kit(s) may be required to house multiple dimmer modules (models i5x (P/N 521225) or i10x (P/N 521226). The IntelliTouch Dimmer Module is only designed to be used with pool and spa lights and not backyard lighting systems.
520148	QuickTouch® for IntelliTouch – Four-function wireless remote for pool and spa functions. Operated within 150 feet range of the Load or Power Center.
520403	Dual Heater Kit – This kit is for use with IntelliTouch systems and enables homeowners to utilize a gas heater and heat pump. The IntelliTouch system determines which heat source is appropriate given the conditions. This kit disables any solar heating controls. The kit includes a heater relay and temperature sensor.
iS10 TEN-FUNCTION SPA-SIDE REMOTE ACCESSORIES	
520149	iS 10 Ten-Function Spa-side Remote, Surface-mount and recessed-mount faceplates, Bisque color, 150 ft. cable
520355	Colored Faceplate Kit for Surface-mount. Includes 1 each. Bisque, Tan, Gray, Black with label set.
520354	Colored Faceplate Kit for Recessed-mount. Includes 1 each. Bisque, Tan, Gray, Black with label set.
520335	Mud box for recessing iS10 into deck or tile. Includes cover plate.

Product	Description
ACCESSORIES FOR INTELLITOUCH SYSTEMS	
520199	1000 ft cable, four conductor, 22 AWG
520106	3HP Relay for IntelliTouch
RCSI	Additional Spa Jets Switch (for multiple jet pumps)
ESO3	Emergency Shut-Off Switch w/Audible Alarm
520138	Indoor Control Panel for IntelliTouch® (White), additional
520499*	Tablet, Acc iTC45. Additional interface option.
520498*	Panel Touch, Acc iTC35. Additional interface option.
520497*	PDA, Acc iTC25. Additional interface option.
520967	Light Direct Connect Kit (eliminates need for j-box)

Product	Description
ACCESSORIES FOR INTELLITOUCH SYSTEMS	
6870002	Telephone remote control for any single circuit, usually Spa mode.
520272	Temperature Sensor
520198	Two-Speed 3HP Relay
263045	Valve Actuator
520285	Valve module for adding up to 3 valve actuators
520818	Com Port Expansion Module
AI101	Surge Suppressor for 115V transformer wiring
AI201	Surge Suppressor for 230V transformer wiring
520119Z	Dead front panel replacement

Note: (*) Requires purchase of an IntelliTouch® ScreenLogic™ iTC Kit, (iTC15, iTC25 or iTC35, iTC45), see page 25.

Elan® is a registration trademark of Elan Home Systems, Inc.

Crestron® is a registered trademark of Crestron Electronics, Inc.

AMX® is a registered trademark of AMX LLC.

Vantage™ is a trademark of Legrand Home Systems, Inc.

Lutron® is a registered trademark of Lutron Electronics.

IntelliTouch® Accessories (Cont'd)



Featured Highlights

- **MobileTouch® Wireless Remote Accessory** – Allows any IntelliTouch® system to have a wireless remote with all capabilities of the indoor control panel. With an average range of 500 feet, pool owners have system control anywhere around the home or yard. Installation is simple, and requires no high voltage wiring. Powered by a replaceable rechargeable lithium-ion battery. Includes an AC/DC adapter for recharging. Water resistant, wireless user interface control panel with high-resolution 3-3/4 in. monochrome backlit LCD. Rechargeable lithium-ion battery. Easy to use control buttons with customizing feature for naming circuits.
- **iS4 Four-Function Spa-side Remote** – Provides control of any four functions, such as pool, spa, auxiliary circuits (AUX 1-8), Feature Circuits, Macros, Heater Enable and Heat Boost. Available in White, Black and Gray. Four cable lengths are available:
- **Expansion Kits** – Models i5X and i10X, offer five or ten additional Auxiliary Circuits for systems i9+3, i9+3S and i10+3D. Each IntelliTouch Expansion Kit requires a Load Center (P/N 521215) or Power Center (P/N 521216). Up to three Expansion Kits and Load or Power Centers may be added to a system, for control of up to 38 Auxiliary Circuits (40 auxiliary circuits for i10+3D).



MobileTouch Wireless Remote & Cradle



iS4 Remote Control

Ordering Information

Product	Description
MOBILETOUCH WIRELESS REMOTE ACCESSORIES	

- | | |
|--------|--|
| 520906 | MobileTouch wireless Accessory Kit includes wireless remote and transceiver module with antenna. |
| 520907 | Additional MobileTouch wireless remote only |

Product	Color	Product	Color	Product	Color	Product	Color
iS4 REMOTE WITH 50 FT. CABLE		iS4 REMOTE WITH 100 FT. CABLE		iS4 REMOTE WITH 150 FT. CABLE		iS4 REMOTE WITH 250 FT. CABLE	
520090	White	520092	White	520094	White	520098	White
520091	Grey	520093	Grey	520095	Grey	520099	Grey
520256	Black	520257	Black	520258	Black	520260	Black

Product	Description	3 HP Relays Kit / Total *	Feature Circuits	Valve Actuators Std. / Opt. / w/Module
EXPANSION KITS				
521225	i5X Expansion Kit	0 / 5	0	0 / 2 / 5
521226	i10X Expansion Kit	5 / 10	0	0 / 2 / 5

* Expansion Kit requires Load or Power Center to be purchased separately, which includes five 3HP relays.

IntelliTouch® Sales & Service Tools

Product	Description
INTELLITOUCH SALES AND SERVICE TOOLS	
520396	Service Panel for IntelliTouch® – If access to the Indoor Control Panel is not available, this service panel can be used by service personnel to help setup, customize, or troubleshoot an IntelliTouch system from the control panel at the equipment pad. Includes an attached 6-foot cable for easy connection to the Personality board.
520456	IntelliTouch Indoor Control Panel POP Display – A non-functional Indoor Control Panel. Make sure all of your dealers have plenty of these for their showrooms. Intended for display and product promotion purposes only.
520400	IntelliTouch Laptop Trainer – Perfect for use in dealer showrooms or by sales personnel to demonstrate complete system functionality to prospective customers.
520352	IntelliTouch Demo Unit – Perfect for use in dealer showrooms or by sales personnel to demonstrate IntelliTouch system functionality with Indoor Control Panel interface option to prospective customers. Fully functioning control panel.
520957	Automation Flash Kit
520461	Quick Reference Card – Credit card size reference guide. Includes step-by-step instructions to set a House Address for Indoor and MobileTouch® control panels, iS10 Spa-Side remote, and Expansion Load or Power Center.



IntelliTouch Demo Unit



IntelliTouch Laptop Trainer



IntelliTouch ICP POP Display



IntelliTouch Service Panel



Quick Reference Card

EasyTouch® Control Systems

Pool/Spa Control Systems



EasyTouch System



Featured Highlights

• New EasyTouch Features include:

- ThermalFlo™ heat pump integration
- Support for 2 VS or 2 VF Pumps
- Supports 8 Feature circuits
- MagicStream® Laminar support
- Control Panel Lockout
- IntelliBrite® pool and spa light support
- iS10 spa-side remote support and control of IntelliFlo® Pump
- Optional Controllers for added convenience: Indoor Control Panel (for 4 or 8 circuit systems), a Wireless controller (for 4 or 8 circuit systems), a QuickTouch® 4-function wireless remote, a 4-button spa side remote, and iS10 spa-side remote.
- All functions controlled with easy, one-button access from the self-contained load center or optional controllers. No need to memorize operating sequences, open and close valves, or reset time clocks and thermostats.
- Built-in diagnostics include automatic verification of the display, microprocessor, switches, indicators, relay outputs, valve outputs, sensor inputs, and communication ports as well as a diagnostic screen that reports failures for troubleshooting and repair purposes
- Includes 150 amp breaker base with space for 10 1-in. breakers
- UL and cUL approved
- Dimensions: 26 in. H x 17 in. W x 5-1/4 in. D

The EasyTouch® family offers a new level of control for homeowner's looking for an affordable, easy to use pool/spa control system. EasyTouch allows full control of all pool/spa features including advanced features such as colored lighting and IntelliChlor® chlorine generator support. Every EasyTouch system includes an easy to use control panel that is built into the outdoor enclosure. This control panel allows for full system setup, programmability, and everyday operation. In addition, there are several other available remote interface choices. The EasyTouch systems come in a variety of configurations: Pool only or Spa only, Pool/Spa with shared equipment, and also integrated with Pentair's unique IntelliChlor salt chlorine generator.

Ordering Information

Product	Model
EASYTOUCH SYSTEMS WITHOUT INTELLICHLOR TRANSFORMER BUILT-IN	
520591	EasyTouch 4P – Single Body (base system - no ICP, no actuators)
520703	EasyTouch 8P – Single Body (base system - no ICP, no actuators)
520538	EasyTouch 4 – Pool/Spa (base system - no ICP, 2 actuators)
520540	EasyTouch 8 – Pool/Spa (base system - no ICP, 2 actuators)
EASYTOUCH SYSTEMS WITH INTELLICHLOR TRANSFORMER AND INTELLICHLOR CELL	
520592	EasyTouch 4PSC-IC20 – Single Body (includes SCG integration & IC20 cell)
520593	EasyTouch 4PSC-IC40 – Single Body (includes SCG integration & IC40 cell)
520704	EasyTouch 8PSC-IC20 – Single Body (includes SCG integration & IC20 cell)
520705	EasyTouch 8PSC-IC40 – Single Body (includes SCG integration & IC40 cell)
520542	EasyTouch 4SC-IC20 – Pool/Spa (includes SCG integration & IC20 cell, 2 actuators)
520543	EasyTouch 4SC-IC40 – Pool/Spa (includes SCG integration & IC40 cell, 2 actuators)
520544	EasyTouch 8SC-IC20 – Pool/Spa (includes SCG integration & IC20 cell, 2 actuators)
520545	EasyTouch 8SC-IC40 – Pool/Spa (includes SCG integration & IC40 cell, 2 actuators)
521150	EasyTouch 8SC-IC60 – Pool/Spa (includes SCG integration & IC60 cell, 2 actuators)
CANADIAN EASYTOUCH SYSTEMS	
520914	EasyTouch 4P-C – Single Body (salt ready system, cell must be ordered separately)
520915	EasyTouch 8-C – Pool/Spa (salt ready system, cell must be ordered separately)
520911	IntelliChlor IC20 cell for Canada
520912	IntelliChlor IC40 cell for Canada

See page 316 for replacement parts.

EasyTouch® Accessories

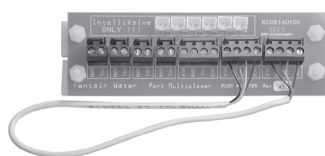
Pool/Spa Control Systems



Product	Description
ACCESSORIES FOR EASYTOUCH® SYSTEMS	
520199	1000 ft cable, four conductor, 22 AWG
520106	3HP Relay for IntelliTouch
520548	EasyTouch® ICP (Indoor Control Panel) for 4 circuit systems
520549	EasyTouch ICP (Indoor Control Panel) for 8 circuit systems
520546	EasyTouch Wireless Controller for 4 circuit system
520547	EasyTouch Wireless Controller for 8 circuit system
520588	IntelliChlor® Pass-through Cell for Winter or start-up
520594	IntelliChlor Diagnostic Wand
520670	IntelliChlor Acid Cleaning Kit
520595	IntelliChlor replacement unions (contains 2 o-rings, 2 couplers, 2 nuts)
520670	IntelliChlor acid washing kit (contains closed end union cap, o-ring, & coupling nut)
520734	IntelliChlor 15 foot extension power cord
520736	IntelliChlor Flow Switch replacement kit
520092	iS4 Spa-side Remote, White 100 ft.
520148	QuickTouch® 4 Button Wireless Remote
AI101	Surge Suppressor for 115V transformer wiring
AI201	Surge Suppressor for 230V transformer wiring
520272	Temperature Sensor
520198	Two-Speed 3HP Relay
263045	Valve Actuator
520818	COM Port Expansion Module with 1 ft. cable
RCSI	Additional Spa Jets Switch (for multiple jet pumps)
ESO3	Emergency Shut-Off Switch w/Audible Alarm
520967	Light Direct Connect Kit (eliminates need for j-box)
520149	IS10 10-function Spa Remote for IntelliTouch



520148 - QuickTouch Wireless Remote



520818 - COM Port Expansion Module



iS4 Remote Control



- 520548 - EasyTouch ICP for 4 circuit systems
- 520549 - EasyTouch ICP for 8 circuit systems
- 520546 - EasyTouch wireless for 4 circuit systems
- 520547 - EasyTouch wireless for 8 circuit systems



- 520554 - IntelliChlor IC20 Cell
- 520555 - IntelliChlor IC40 Cell
- 521105 - IntelliChlor IC60 Cell



ESO3 Emergency Shut-Off Switch

See page 316 for replacement parts.

Compool® to EasyTouch® Upgrade



Featured Highlights

- Allows easy upgrade to EasyTouch® functionality for the following Compool® Systems: CP3400, CP3600, CP3800, CP3810, CPI1000 *, CP2000 *, CP3000, CP30 *, CPI100 *, LX100EZT *, LX100EZTL *, 520348 *, 520349 *, TimeMaster with LX-10 power center *
- Filter pump + 7 Auxiliaries
- AUX Extra Support
- Works with EasyTouch Indoor Control Panel (520549) and EasyTouch Wireless Remote (520547)
- Supports 2 - VS or 2 - VF IntelliFlo® Pumps, iS4 and iS10 spa side remotes, IntelliChlor®, IntelliBrite® LED Lights, ThermalFlo™ Heat Pumps, and MagicStream® Laminar Jets.
- 8 Feature Circuits

* Requires Compool to EasyTouch Upgrade System with New System Transformer Kit (P/N 521247)

Ordering Information

Product	Description
COMPOOL TO EASYTOUCH UPGRADE	
521107	Compool to EasyTouch Upgrade without transformer Kit
521247	Compool to EasyTouch Upgrade with new system transformer Kit
COMPOOL TO EASYTOUCH UPGRADE ACCESSORIES	
520549	EasyTouch Indoor Control Panel (8 circuits)
520547	EasyTouch Wireless Remote (8 circuits)
520148	QuickTouch Wireless Remote (4 circuits)
520092	iS4 Spa-side Remote, White 100 ft.
520149	iS10 Spa-Side Remote, Bisque 150 ft.
263045	Valve Actuator
520272	Temperature Sensor (Air/Water/Solar, 20 ft. Cable)
520818	COM port expansion Module
520554	IntelliChlor IC20 Cell
520555	IntelliChlor IC40 Cell
521105	IntelliChlor IC60 Cell
520556	IntelliChlor Power Center
RLYLXD	Relay Kit for 2 Speed Pumps
RLYLX3HP	Additional 25 Amp, 3 HP Power Relay
COMPOOL TO EASYTOUCH UPGRADE ACCESSORIES	
521099Z	Compool to EasyTouch Replacement Circuit Board

SunTouch® Control System



Featured Highlights

- One touch function – no complicated routine to memorize
- Ability to program pool and spa and two additional features. All circuits in the system can control four operating schedules (maximum six total schedules per system)
- Supports 4 feature circuits for programming convenience
- Compatible with gas or electric heaters, heat pumps, and solar systems
- Temperature control can be set in one degree increments
- Supports one IntelliFlo® VS or VF Pump and IntelliChlor® Salt Chlorine Generator



SunTouch Control System
Pool/Spa - (520820)



SunTouch Solar Control System
(520819)

SunTouch is the easy way to keep your pool and spa clean, comfortable, and ready to enjoy. With the touch of a few buttons, you can quickly program your pool and spa filtration and heating cycles to fit your schedule. And it's just as simple to change programs or switch to manual mode for those unplanned, spontaneous plunges. With SunTouch, your pump and heater automatically run whenever you want, for as long as you want so your pool and spa are always warm and inviting.

In addition to controlling your pump and heater, the standard SunTouch package has the ability to schedule operation of additional functions, such as your lights or automatic cleaner. You can also add a third valve actuator to automate a solar heating system or water feature.

Ordering Information

Product	Description
SUNTOUCH CONTROL SYSTEMS	
520820	SunTouch Control System (pool/spa) – Includes 2 actuators, 2 temp sensors (20 ft. water, 40 in. air) and 3 relays
520819	SunTouch Solar Control System – Includes 1 actuator, 1 solar valve, and 2 temp sensors (20 ft. water, 40 in. solar)
520859	SunTouch Single Body Control System – Includes temp sensors (20 ft. water, 40 in. air) and 3 relays
520856	SunTouch Solar with 3-way valve – Includes 1 actuator, 3-way valve, and 2 temp sensors (20 ft. water, 40 in. solar)
520857	SunTouch Booster Pump Version – Includes 1 relay, and 2 temp sensors (20 ft. water, 40 in. solar)

Product	Description
ACCESSORIES FOR SUNTOUCH SOLAR CONTROL SYSTEMS	
520148	QuickTouch Wireless Remote
520106	3HP Relay
520272	Temp Sensor
520198	2 Speed Pump Relay
ES03	Emergency Shut-Off Switch w/Audible Alarm
263045	Valve Actuator with 25 ft. Cable
520967	Light Direct Connect Kit (eliminates need for j-box)

See page 316 for replacement parts.

Remote Control and Monitoring Software

For The Service Pro



Exclusive from Pentair! Now, working through the Internet, you can remotely monitor system and equipment conditions and diagnose problems. Log-in using the advanced ScreenLogic® interface to make system changes as needed. This option is ideal for any service professional, particularly those with large customer territories. Handle questions or concerns without a site visit and save time and fuel while providing top-notch customer service.

Customer Name	Model	Version	Air Temp	Pool Pump	Pool Set Point	Pool Actual Temp	Pool Heat Mode	Spa Pump	Spa Set Point	Spa Actual Temp	Spa Heat Mode	Spa Side Remote	Salt Level	Pool Chlorine Output	Spa Chlorine Output	Lights On / Total	Alarms	IntelliFlo Present	Status
David MacCallum's Pool	System i9-3S / IntelliChlor IC40	1.060	78 F	On	90 F	88 F	Heater	Off	95 F	88 F	Off	Disabled	3500	2 %	2 %	0 / 1	None	No	Connected OK
John Smith's Pool	System i10-3D	1.090	65 F	On	87 F	87 F	Heater	On	95 F	95 F	Heater	Enabled	-	-	-	0 / 2	None	No	Connected OK
Rudy Murphy's Pool	UNKNOWN	UNKNOWN	-	-	-	-	-	-	-	-	-	-	-	-	-	-	-	-	Not Currently Connected
Bill Dunn's Pool	System i10-3D	1.070	86 F	On	84 F	87 F	Heater	On	95 F	85 F	Off	Disabled	-	-	-	0 / 3	None	No	Connected OK
Bridget Lyon's Pool	System i10-3D	1.060	-	On	80 F	80 F	Heater	On	100 F	99 F	Heater	Enabled	0	50 %	50 %	-	1	No	Connected OK
Carlos Lukyn's Pool	System i7-3 / IntelliChlor IC20	1.070	75 F	On	81 F	74 F	Off	Off	100 F	74 F	Off	Enabled	2750	60 %	60 %	0 / 3	1	No	Connected OK
Amy Armstrong's Pool	System i9-3 / IntelliChlor IC40	1.090	96 F	On	85 F	78 F	Off	Off	101 F	78 F	Heater	Enabled	2400	80 %	80 %	0 / 3	1	No	Connected OK
Sheldon Netzel's Pool	System i9-3	1.070	70 F	On	80 F	69 F	Off	Off	92 F	69 F	Off	Enabled	-	-	-	-	None	No	Connected OK
Sally Hall's Pool	System i9-3 / IntelliChlor IC20	1.090	74 F	On	78 F	68 F	Heater	Off	101 F	68 F	Heater	Enabled	2400	50 %	50 %	1 / 2	1	No	Connected OK
Dave Murray's Pool	System i9-3 / IntelliChlor IC40	1.070	101 F	Off	80 F	84 F	Off	On	84 F	84 F	Off	Disabled	2750	90 %	90 %	-	1	No	Connected OK (Service Mode)
Joe Washington's Pool	System i9-3	1.060	67 F	Off	-	68 F	Off	Off	-	68 F	Off	Disabled	-	-	-	0 / 3	None	No	Connected OK
Therese Chasen's Pool	System i9-3 / IntelliChlor IC20	1.090	81 F	Off	86 F	78 F	Off	Off	100 F	78 F	Off	Disabled	3500	20 %	0 %	0 / 8	1	Yes	Connected OK

Computer screen photo shows complete system status for every customer with an IntelliTouch, EasyTouch or SunTouch system. Conditions requiring attention are quickly identified and often corrected from the comfort of your office. Just point and click to turn equipment on and off, or change programs and schedules.

Now works with SunTouch®, EasyTouch® and IntelliTouch® – EasyTouch and IntelliTouch support remote monitoring & control, while SunTouch only supports remote monitoring.

Ordering Information

Product	Description
REMOTE CONTROL AND MONITORING SOFTWARE	
520838	Starter Kit includes CD-ROM protocol adapter, and a custom configured wireless router to remotely monitor and control one pool. Existing ScreenLogic customers have everything required to be remotely monitored and controlled. You can add additional pools by purchasing the Expansion Kit.
520853	Expansion Kit – Adds an additional pool

Valve Actuator

Valve Control Systems



Featured Highlights

CVA24 Valve Actuator

- Prevents dead-heading of pumps
- Corrosion-proof enclosure
- Includes 25 ft. cable
- Service switch (for flow direction)
- ETL recognized
- UL listed for use with IntelliTouch®
- Operates Compool®, Ortega® or Jandy® Valves
- Compatible with all 24VAC Control Systems



Valve Actuator

Designed for use with 2-port and 3-port valves. Features maximum torque, 24VAC bi-directional motor.

Now comes with 25 ft. Cable for wiring convenience!

Ordering Information

Product	Model	Voltage	Cable	Rotation	Compatibility	Motor
VALVE ACTUATORS						
263043	CVA24L	24 VAC	3-wire 25 ft.	90 deg.	2-port Compool/Ortega/Jandy Valves	Bi-directional
263044	CVA24Y	24 VAC	3-wire 25 ft.	120 deg.	3-port Compool PTV2Y Valve	Bi-directional
263045	CVA24T	24 VAC	3-wire 25 ft.	180 deg.	3-port Compool/Ortega/Jandy Valves	Bi-directional

Jandy® is a registered trademark of Jandy Industries, Inc.

GFCI Circuit Breakers

Featured Highlights

- Added safety of 6 milliamp Personnel Protection
- Meets NEC 2008 Standards for Pool Pumps
- Compatible with IntelliTouch and EasyTouch control systems
- Works in any breaker base approved for use with Siemens QPF style breakers
- Designed to protect personnel exposed to ground faults in AC, DC, and mixed AC/DC systems where levels exceed 6 milliamps



Product	Description	Carton Qty.	Carton Wt (Lbs.)
GFCI CIRCUIT BREAKERS			
PA115GF	1-pole 15 amp GFCI	30	11.50
PA120GF	1-pole 20 amp GFCI	30	11.50
PA215GF	2-pole 15 amp GFC	10	11.50
PA220GF	2-pole 20 amp GFC	10	11.50

LX80 & LX820 Systems

Commercial Pool/Spa Control Systems



LX802

Designed for a commercial pool and spa application. Provides Remote Spa Jets switch (suitable for outdoor locations) with electronic countdown timer (15/30 minutes).

Featured Highlights

LX802 Commercial Pool/Spa Control System

- Emergency Shut-off Switch (disables all pumps)
- Audio Alarm
- Power Center available (with or without circuit breaker sub-panel) at the equipment site, features: mechanical time clocks for the Pool and Spa Filter Pumps, power relays (3) for Pool and Spa Filter Pumps and Spa jet Pump, electronic cool-down cycle for pool and spa heaters and equipment service switches

LX8202 Emergency Shut-off System

- Emergency Shut-off Switch
- Audio Alarm
- Power Center at the equipment site with equipment status lights and power relays (2) for Spa Filter Pump and Jet Booster Pump

Ordering Information

Product	Circuits	Power Relays Std/Max	Circuit Breaker Capacity	Compatible Heaters	Voltage	Relay Amp Inductive
LX80 & LX820 COMMERCIAL POOL/SPA CONTROL SYSTEMS						
LX802	Pool Filter, Spa Filter, Jet1, Jet2	3 / 8	N/A	Gas/Elec/Solar/Heat Pump	115V/230V	20
LX802L	Pool Filter, Spa Filter, Jet1, Jet2	3 / 8	4qty. @ 230V	Gas/Elec/Solar/Heat Pump	115V/230V	20
LX8202	Spa Filter, Jet1, Jet2	2 / 3	N/A	N/A	115V/230V	20



LX8202



LX8202

Designed for retrofitting commercial spas where an emergency shut-off switch is required.

Product	Description
ACCESSORIES FOR LX80 COMMERCIAL POOL/SPA CONTROL SYSTEM	
263045	CVA24 Solar Valve Actuator
MODSOL	Temperature Control Module (for pool or spa). Required for solar control
RCSI	Additional Spa Jets Switch (for multiple jet pumps)
ES03	Emergency Shut-Off Switch w/Audible Alarm
RLYLX	Additional Power Relay (for auxiliary equipment)
RLYLX3HP	Additional 25 Amp, 3 HP Power Relay (for auxiliary equipment)
RYALX	Harness to operate 2 Power Relays from one control circuit
TSSL	Solar Temperature Sensor
ACCESSORIES FOR LX8202 COMMERCIAL POOL/SPA CONTROL SYSTEM	
RLYSC	Additional Power Relay (for second jet pump or filter pump)
RLYSC3HP	Additional 25 Amp, 3 HP Power Relay (for auxiliary equipment))

Smart pH™ Control Systems

The Smart pH is designed for any application where simple, automatic pH control is desired. It is the perfect companion for the IntelliChlor Salt Chlorinator, which automatically produces chlorine from common, safe salt. A byproduct of chlorine generation is a steady increase in water's pH, which can be harmful to the pool (e.g. plaster scaling) and very detrimental to the bather experience. The typical method of controlling pH is to manually add large amounts of pH correction "as needed," which sometimes means "when remembered." The Smart pH regularly feeds "correction" in small amounts to keep the water in range at all times automatically, and in the most simple to use and economical package in the industry.

At the core of any Smart pH installation is the Smart pH, Complete, No Pumps (701000000). This includes all items required for monitoring pH, including one pH Sensor and one Flow Switch Sensor to be mounted inline via T Fittings (included for 2 in. pipe only, PVC cementing required), and mounting hardware.



Smart pH Control System

Ordering Information

To Order a complete turn-key solution using one item number, select from the following Quick Kits:

Product	Description	Includes the following in addition to the 701000000 Smart pH, Complete, No Pumps:	
		pH Control Storage/Feed	IntelliChlor Items Included
INTELLICHLOR/SMART PH QUICK KITS			
521173	Smart pH Quick Kit, Acid Solution Ready	521172 - 7-1/2 Gallon STS Chem Tank/Pump Combo	None
701000010	Smart pH Quick Kit, CO2 Ready	714000070 Kit, CO2, with Diffuser, Solenoid, Regulator	None
521174	IC20/Smart pH Quick Kit (Acid Ready Solution)	521172 - 7-1/2 Gallon STS Chem Tank/Pump Combo	IntelliChlor IC20 Cell (US Version) plus Power Center
521175	IC40/Smart pH Quick Kit (Acid Ready Solution)	521172 - 7-1/2 Gallon STS Chem Tank/Pump Combo	IntelliChlor IC40 Cell (US Version) plus Power Center
LIQUID MURIATIC SOLUTION OPTION			
521172	STS Chem Tank/Pump Combo, 45MP, Fixed #3, 25PSI, 7.5 Gal, UV Grey		
CO2 GAS OPTION			
714000070	CO2 Kit, with Diffuser, Solenoid, Regulator		

Note: CO2/Storage Tanks are supplied by 3rd parties.

AcuCheck3™ Electronic Chlorine, pH, and Alkalinity Tester

AcuCheck3 is a hand-held electronic water test meter that provides highly accurate pool water chemistry data with digital readings using DPD chemistry. Quick and easy – simply fill and insert a test tube, press a button, and you have a precise chemical reading. No more test strips or frequent trips to the pool store for accurate chemical readings. AcuCheck3 comes with 90 reagent tablets, test tubes, crushing stick and convenient tablet container.



AcuCheck3 Test Kit

Ordering Information

Product	Model	Description
ACUCHECK TEST KIT		
745000110	AcuCheckCA	Acu-Check 3, Instrument Cl, pH, Alk

AquaPC OnPoint™

Control Systems



While the components of the AquaPC OnPoint are available separately for replacements and special configurations, it is recommended that all new installations start with an AquaPC OnPoint Mounted, No Pumps (700000160). This includes all items required for monitoring pH and ORP, including our state-of-the-art flow cell, mounted on a common panel. This does not include storage or feed options for sanitizers or pH control, which must be added separately depending on the specific application.

For use with Commercial IntelliChlor Salt Chlorinator – The AquaPC OnPoint is the perfect companion for the Commercial IntelliChlor Salt Chlorinator. Unlike the standard IntelliChlor, the commercial unit requires a device to tell it when to feed sanitizer. The AquaPC OnPoint fills this need, while also automatically reducing pH – a necessity with salt chlorination.



**AquaPC OnPoint
Control System**

Ordering Information

To complete a turn-key installation, storage/feed options for pH control must also be ordered in addition to the AquaPC OnPoint.

Product	Description
STEP 1 - SELECT CONTROLLER	
700000160	AquaPC OnPoint Mounted, No Pumps
STEP 2 - SELECT MURIATIC ACID TANK AND PUMP	
521172	STS Chem Tank/Pump Combo, 45MP, Fixed #3, 25PSI, 7.5 Gal, UV Grey
751002660	STS Chem Tank/Pump Combo, 45MP, Fixed #3, 25PSI, 15 Gal, UV Grey
OPTIONAL UPGRADES	
714000070	CO2 Kit, with Diffuser, Solenoid, Regulator
744000430	Upgrade to Gold ORP Sensor, recommended for Salt-Chlorine Use

Gold ORP Probe Upgrade: AquaPC OnPoint comes standard with a platinum probe. However a gold probe is strongly recommended for use with salt-chlorine generators. This can be ordered as an upgrade.

FOR USE WITH LIQUID CHLORINE FEED: The AquaPC OnPoint is also a perfect pH/ORP Controller for traditional liquid chlorine feed. Simply order ONE ADDITIONAL STS Chem Tank/Pump Combo (listed above) for chlorine feed and storage in place of Commercial IntelliChlor/Power Center. The pH delivery options are the same as above. The Gold Probe Upgrade is not required.