



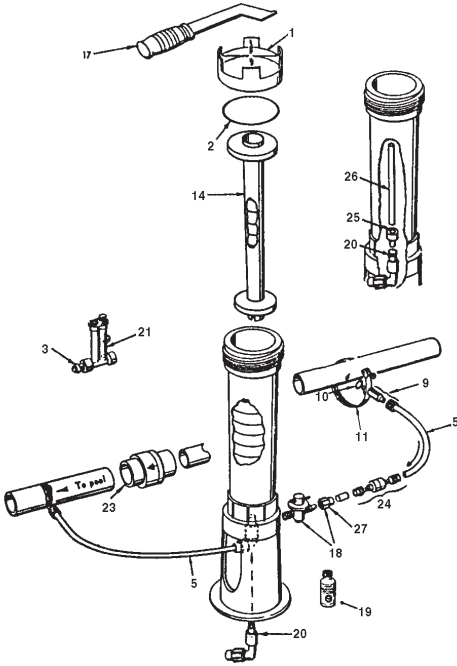
# Sanitizer Parts

Replacement Parts  
for Sanitizers



# Automatic Feeder - Model 300, 302, 300-19, 300-29

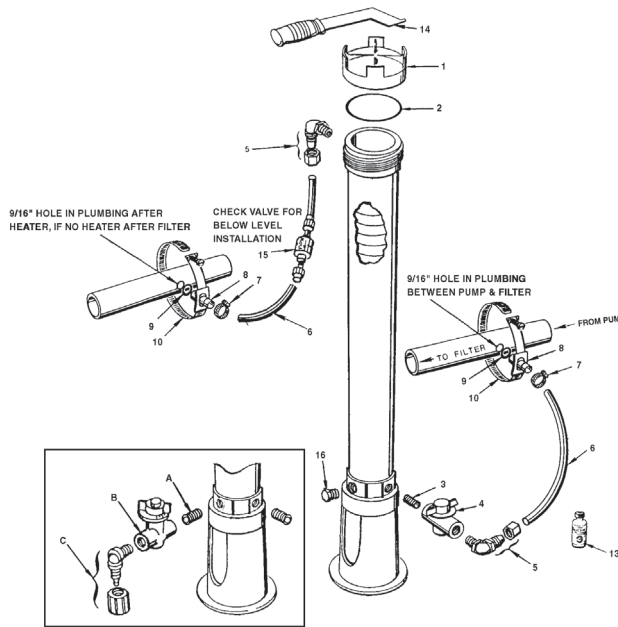
## Replacement Parts



Item	Qty.	Part No.	Description	US List	Can. List
Order No.:		R171016	R171026		
Model No.:		300	302		
Description:		AUTOMATIC FEEDER	SPA HOT TUB FEEDER		
1	1	R172008W	3 in. threaded cap, white	14.61	16.36
2	1	R172009	O-ring, cap	5.51	6.17
3	Opt.	R172020	Check valve Old Style	3.88	4.35
5	1	R172023	3/8 in. o.d. x 1/4 in. i.d. tubing, 8 ft.	7.00	7.84
9	2	R172032	Tube fitting with compression nut	4.68	5.24
10	2	R172033	Gasket	1.75	1.96
11	2	R172034	Saddle clamp	4.68	5.24
14	1	R172037	Spa chamber #302 only	13.47	15.09
17	Opt.	R172052	Cap wrench	22.56	25.27
18	1	R172060	Control valve 1/4 in. NPT x tube with compression nut	19.41	21.74
19	1	R172036	Silicone lubricant, 3/4 oz.	7.95	8.90
20	1	R172061	Combination check valve / elbow	4.78	5.35
21	Opt.	R172080	Flow indicator w/check valve	CALL	CALL
23	Opt.	R172288	1-1/2 in.-2 in. Corrosion resistant check valve	29.50	33.04
24	Opt.	R172323	1/4 in. Corrosion resistant check valve	13.85	15.51
25		R172061B	Standpipe adapter, Bromine	4.68	5.24
26		R18761	6 in. Standpipe 3/8 in. o.d. x 1/4 in. i.d.	0.75	0.84
27	1	R18706	Compression nut only	1.19	1.33
<b>Order No.: R172064</b>					
<b>Parts bag for 300, 302, 300-19 &amp; 300-29</b>					
9	2	R172032	Tube fitting with compression nut	4.68	5.24
10	2	R172033	Gasket	1.75	1.96
11	2	R172034	Saddle clamp	4.68	5.24
18	1	R172060	Control valve 1/4 in. NPT x tube with compression nut	19.41	21.74
19	1	R172036	Silicone lubricant	7.95	8.90
20	1	R172061	Combination check valve / elbow	4.78	5.35

# Automatic Feeder - Model 300-29X

## Replacement Parts

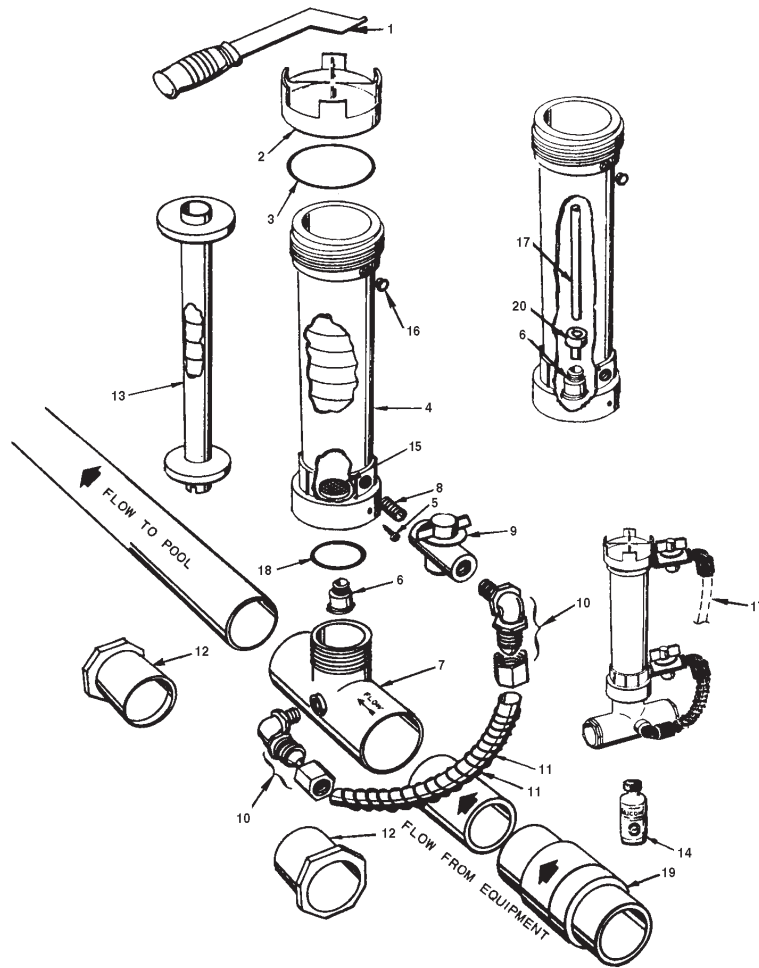


Item	Qty.	Part No.	Description	US List	Can. List
Order No.: R171070 Model No.: 300-29X Description: COMMERCIAL SIZE FEEDER					
1	1	R172008V	3 in. threaded cap, white	14.61	16.36
2	1	R172009	O-ring, cap	5.51	6.17
3	1	R172256	1/2 in. x Short MPT nipple	4.68	5.24
4	1	R172086	1/2 in. Control valve	42.19	47.25
5	2	R172272	1/2 in. 90° NPT x tube fitting w/nut	6.22	6.97
5	Opt.	R172274	Compression nut only (for R172272)	2.25	2.52
6	1	R172269	1/2 in. i.d. Feeder tube, 12 ft.	14.58	16.33
7	2	R175013	S/S tubing clamp	4.68	5.24
8	2	R172262	Saddle tube fitting	4.68	5.24
9	2	R172263	Saddle gasket	1.75	1.96
10	2	R172264	Saddle clamp	8.63	9.67
10A	Opt.	R172264XL	Saddle clamp for 3 in., 4 in. & 6 in. pipe	11.84	13.26
11	1	R172392	1/4 in. MPT PVC plug (old style)	4.68	5.24
13	1	R172036	Silicone lubricant, 3/4 oz.	7.95	8.90
14	Opt.	R172052	Cap wrench	22.56	25.27
15	Opt.	R172324NS	1/2 in. Corrosion resistant check valve, tube x tube (ball)	CALL	CALL
16	1	R172134	1/2 in. MPT PVC plug	5.15	5.77

Item	Qty.	Part No.	Description	US List	Can. List
Order No.: R172275 Parts bag for 300-29X Complete					
3	1	R172256	1/2 in. x Short MPT nipple	4.68	5.24
4	1	R172086	1/2 in. Control valve	42.19	47.25
5	2	R172272	1/2 in. 90° NPT x tube fitting w/nut	6.22	6.97
5	Opt.	R172274	Compression nut only (for R172272)	2.25	2.52
7	2	R175013	S/S tubing clamp	4.68	5.24
8	2	R172262	Saddle tube fitting	4.68	5.24
9	2	R172263	Saddle gasket	1.75	1.96
10	2	R172264	Saddle clamp	8.63	9.67
13	1	R172036	Silicone lubricant	7.95	8.90
Order No.: R172002 Optional Drain Kit					
A		R172256	1/2 in. Short MPT nipple	4.68	5.24
B		R172086	1/2 in. Control valve	42.19	47.25
C		R172272	1/2 in. 90° NPT x tube fitting w/nut	6.22	6.97

# Automatic Feeder - Model 320

## Replacement Parts



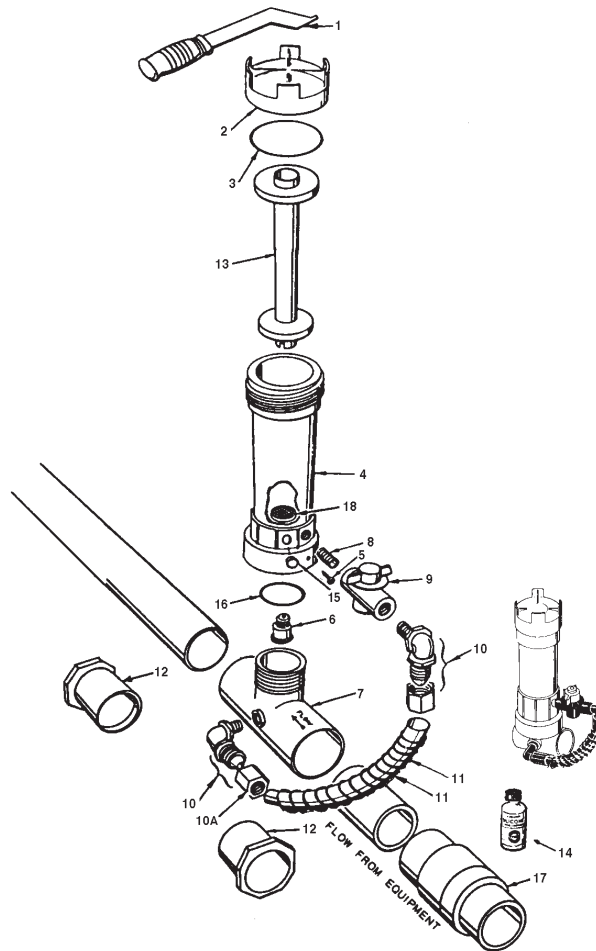
Item	Qty.	Part No.	Description	US List	Can. List
Order No.: R171096					
Model No.: 320					
Description: IN-LINE AUTOMATIC FEEDER					
1	Opt.	R172052	Cap wrench	22.56	25.27
2	1	R172008W	3 in. threaded cap - white	14.61	16.36
3	1	R172009	O-ring, cap	5.51	6.17
4	1	R172321	#320 Body only (new style)	40.45	45.30
5	1	R01052	Lock screw	1.19	1.33
6	1	R172248	Check valve	6.10	6.83
7	1	R172317	Diverter tee 1-1/2 NPT x 2 in. slip	21.79	24.40
8	1	R172256	1/2 in. x Short MPT nipple	4.68	5.24
9	1	R172086	1/2 in. Control valve	42.19	47.25
10	2	R172272	1/2 in. NPT x tube 90° ELL w/nut	6.22	6.97
10	Opt.	R172274	Compression nut only (for R172272)	2.25	2.52

Item	Qty.	Part No.	Description	US List	Can. List
11	1	R172091	5/8 in. o.d. Short feeder tube	4.68	5.24
11	Opt.	R171097	Tube support spring	4.68	5.24
12	2	R1722101	2 in. x 1-1/2 in. S x S bushing for 1-1/2 in. PVC only <sup>1</sup>	CALL	CALL
13	Opt.	R172037	Spa chamber	13.47	15.09
14	1	R172036	Silicone lubricant, 3/4 oz.	7.95	8.90
15	1	R172255	Screen	4.68	5.24
16	1	R172134	1/2 in. NPT PVC plug	5.15	5.77
17	1	R172253	5/8 in. o.d. 18 in. tube (optional top feed)	4.68	5.24
18	1	R172319	Bottom O-ring	1.19	1.33
19	Opt.	R172288	1-1/2 in. Corrosion resistant check valve	29.50	33.04
20	1	R172048B	Standpipe adapter, Bromine	1.19	1.33

<sup>1</sup> Not used with 2 in. PVC.

# Automatic Feeder - Model 322

## Replacement Parts



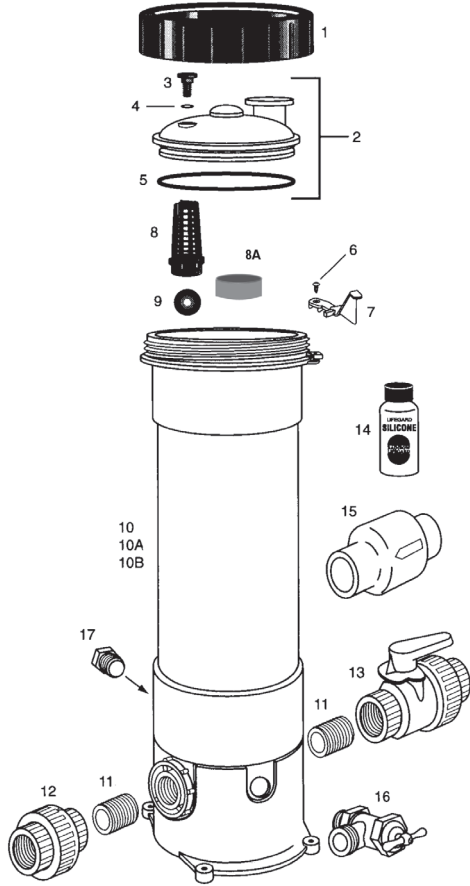
Item	Qty.	Part No.	Description	US List	Can. List
Order No.: R171100					
Model No.: 322					
Description: IN-LINE FEEDER					
1	Opt.	R172052	Cap wrench	22.56	25.27
2	1	R172008W	3 in. threaded cap, white	14.61	16.36
3	1	R172009	O-ring, cap	5.51	6.17
5	1	R01052	Lock screw	1.19	1.33
6	1	R172331	Check valve w/restrictor	5.40	6.05
7	1	R172317	Diverter tee 1-1/2 NPT x 2 in. slip x slip	21.79	24.40
8	1	R172256	1/2 in. x Short MPT nipple	4.68	5.24
9	1	R172086	1/2 in. Control valve	42.19	47.25
10	2	R172272	1/2 in. NPT x tube 90° ELL w/nut	6.22	6.97

Item	Qty.	Part No.	Description	US List	Can. List
10A	Opt.	R172274	Compression nut only (for R172272)	2.25	2.52
11	1	R172091	5/8 in. o.d. short feeder tube	4.68	5.24
11	1	R171097	Tube support spring	4.68	5.24
12	2	R1722101	2 in. x 1-1/2 in. S x S bushing (for 1-1/2 in. PVC only) <sup>1</sup>	CALL	CALL
13	1	R172258	Chemical chamber	12.88	14.43
14	1	R172036	Silicone lubricant, 3/4 oz.	7.95	8.90
15	1	R172007	1/4 in. NPT plug	4.68	5.24
16	1	R172319	Bottom O-ring	1.19	1.33
17	Opt.	R172288	1-1/2 in.-2 in. Corrosion resistant check valve	29.50	33.04
18	1	R172255	Screen	4.68	5.24

<sup>1</sup> Not used with 2 in. PVC.

# High Capacity Automatic Feeders Models HC-3315, HC-3330, HC-3340

## Replacement Parts



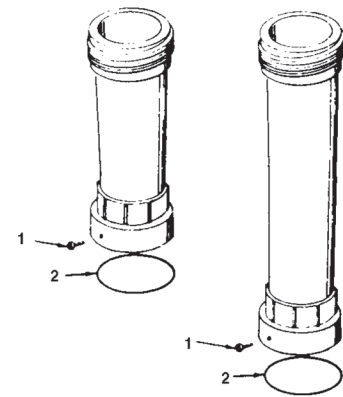
Item	Qty.	Part No.	Description	US List	Can. List
Order No.: R171215, R171230, R171240					
Model No.: HC-3315, HC-3330, HC-3340					
Description: HIGH CAPACITY AUTOMATIC FEEDER					
1	1	R172214	Lock ring	13.95	15.62
2	1	R172385D	Lid assembly complete	25.42	28.47
3	1	R172224X	Vent valve	4.68	5.24
4	1	R172221	O-ring vent valve	1.19	1.33
5	1	R172240	O-ring lid to housing	14.54	16.28
6	1	R172375	Lock screw	1.19	1.33
7	1	R172374	Lock spring	4.68	5.24
8	1	R175251	Screen	4.60	5.15
8A	1	R171919	Check Valve Seat	CALL	CALL
9	1	R172435	Check ball	1.19	1.33
11	2	R270484	1 in. Close nipple	4.68	5.24
12	1	R270531	1 in. Threaded union	14.26	15.97
13	1	R172439	Control valve	68.13	76.31
14	1	R172036	Silicone lubricant, 3/4 oz.	7.95	8.90
15	Opt.	R172288	1-1/2 in.-2 in. Check valve	29.50	33.04
16	1	R175009	Hose Bib w/t Handle 1/2 in.	14.03	15.71
17	1	R172134	1/2 in. threaded plug	5.15	5.77
<b>NOT SHOWN</b>					
		R172082	Flow rate indicator	CALL	CALL

# Extensions/Dispensers/Flow Indicators

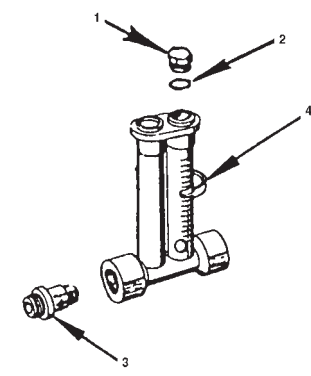
## Replacement Parts



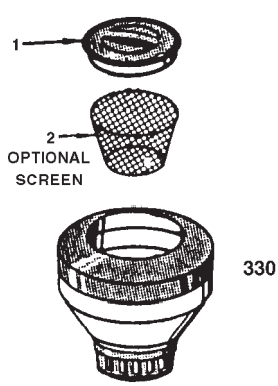
Item	Qty.	Part No.	Description	US List	Can. List
Order No.: R172087 10 IN. EXTENSION COMPLETE					
Order No.: R172283 20 IN. EXTENSION COMPLETE					
1	1	R172078	Lockscrew (bottom collar)	1.19	1.33
2	1	R172009	O-ring	5.51	6.17
Order No.: R172080 Description: FLOW INDICATOR					
1	1	R172392	Access plug 1/4 in. MPT	4.68	5.24
2	1	R172393	O-ring	4.68	5.24
3	1	R172020	Check valve	3.88	4.35
4	1	R172235	Marker clip	4.68	5.24
Order No.: R172627 Description: CORROSION RESISTANT FLOW INDICATOR					
1	1	R172276	Commercial flow indicator	52.61	58.92
1A	1	R172313	1/2 in. Coupling (included with flow indicator)	4.68	5.24
2	1	R270422	1/2 in. x 90° Elbow FPT	4.68	5.24
3	1	R172272	1/2 in. x 90° NPT x tube fitting with nut	6.22	6.97
4	1	R172628	Saddle clamp with inlet fitting (threaded)	20.27	22.70
5	1	R172263	Saddle gasket	1.75	1.96
6	1	R172324	1/2 in. Corrosion resistant check valve. Tube x tube	CALL	CALL
Order No.: R171086 Model No.: 330 Description: FLOATING DISPENSER					
1	1	R18729B	Lid only (new style – fits 'B' body)	4.68	5.24
2	1	R18856	Screen	6.86	7.68
Order No.: R171130 Description: SPLASHER POOL/SPA DISPENSER					
1	1	R18902	Cap	1.54	1.72
Order No.: R171090 Model No.: 335 Description: SPA OR SMALL POOL FLOATING DISPENSERS					
1	1	R18855	Screen	2.43	2.72
1	1	R18819	Lock ring	4.44	4.97



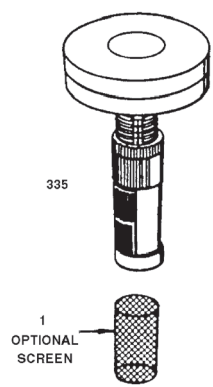
R172087 R172283



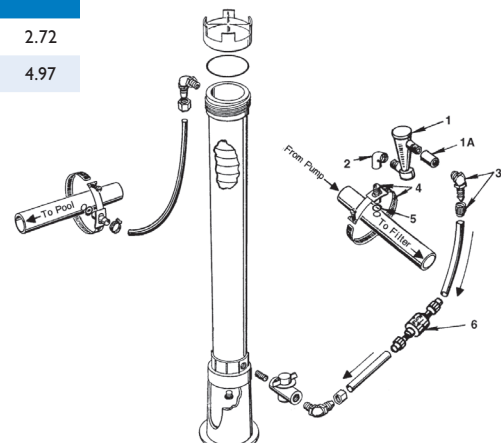
R172080



R171086



R171090



R172627

Product on page 210.

